

# AC2000 Zettler Fire Interface



## Features that make a difference:

- Activated alarms shown instantly within AC2000 Security Hub module; Zettler panels sensors/icons placed on Security Hub Maps
- Fire alarms reported instantly on AC2000 Security Hub application for central monitoring
- Convenient and easy to integrate with existing AC2000 installations
- Communicates with Fire Network via external MZX BACnet Converter
- Graphical representation of current states for MZX Components: Points, Zones and Panels
- MZX Component state changes displayed as Alarms and Events

The AC2000 Zettler Fire Interface enables AC2000 to act as the central Security Management System (SMS) and provides a fully integrated interface for monitoring and reporting building security events.

Through the AC2000 Zettler Fire Interface these alarms and events can be displayed in a single alarm screen in the central AC2000 Security Hub application.

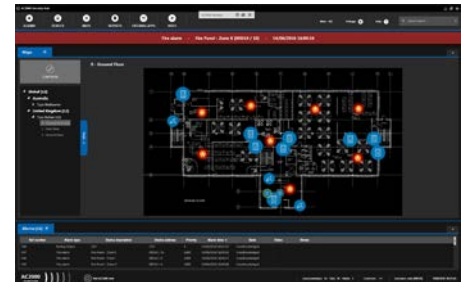
The AC2000 Zettler Interface enables uni-directional communication allowing the AC2000 system to receive alarms from the Zettler Range Fire Detection System consisting of a network of up to 99 Fire Panels – each one controlling sets of Points and Zones.

- Points are individual Sensors and Call-Points used to detect and report fire. Up to 250 sensors may be connected to each loop and up to 8 loops may be supported, leading to a maximum of 2000 points supported per panel.
- Zones are groups of Points, usually located within the same physical area. Each type of fire panel supports different number of Zones up to the maximum of 240 Zones.

## Ease of Configuration

Using the MXCfgImport tool on the AC2000 server the Zettler Panel configuration can be easily imported into the AC2000 database from the configuration file used to setup the MZX Speak – BACnet converter module. After this the Panels, Zones and Points can be placed onto the Security Hub maps.

With no additional software or hardware required the AC2000 Zettler Fire Interface is an ideal choice for integrated building safety and security systems.

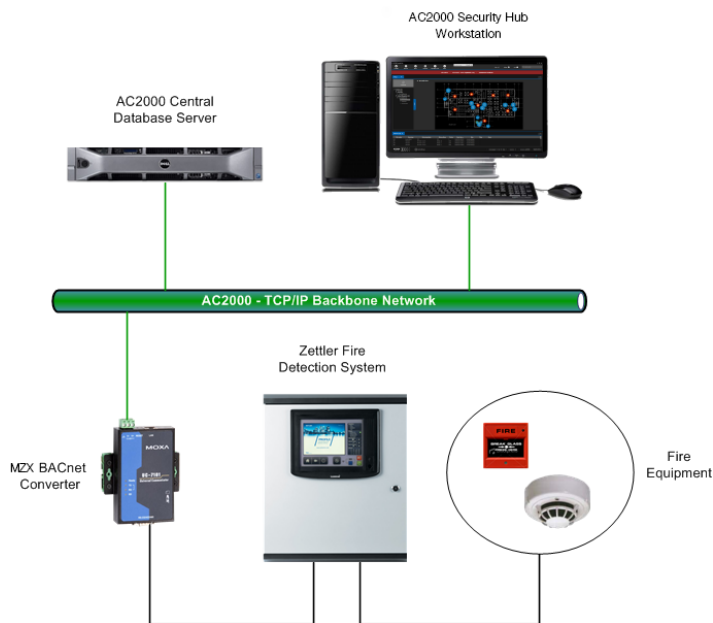


## How does the AC2000 Zettler Fire Interface work?

Data coming from the Zettler Fire Panels is communicated through the Zettler Panel network using Zettlers MZX Speak protocol. Through the use of a specially programmed converter unit, messages in the MZX Speak format can be converted to BACnet Change-of-Value (COV) Notifications. These are then processed through the AC2000 BACnet Interface. The MZX-BACnet Converter module is capable of understanding the MZX Speak protocol v3.x, v4.x and v5.x.

## Central Alarm Management

Fire Alarms are sent to the AC2000 Security Hub application where they can be acknowledged directly via the AC2000 access control server. Fire icons can be placed onto the Security Hub graphical maps alongside access control readers and camera locations. Alarms are received, processed and reported on the AC2000 Security Hub application for central management by security personnel.



## Activate External Systems

Fire alarms can be configured to activate other systems such as a CCTV matrix, or can be used to trigger video recording on a compatible digital video management system (DVMS).

## Zettler Fire Panel Configuration

Zettler Fire Panels should be interfaced to the TCP/IP LAN using a programmed MZX Speak / BACnet Converter and configured for the Zettler panel network to be used on the same network as the AC2000 CDC access control server. Zettler Fire Detection System panels transmit data in native MZX Speak protocol. A single MZX BACnet device will support up to 2000 zones and points. Multiple devices may be required for large Fire Networks. AC2000 receives the BACnet alarms over TCP/IP for processing and display on the AC2000 Security Hub workstation.

## Requirements

- Security Hub and Video Viewer available from AC2000 v7.1 Service Pack 1 upwards
- AC2000 v7.0 software & upwards
- AC2000 Airport v7.0 software & upwards
- AC2000 Security Hub
- AC2000 Zettler Fire Interface License
- MZX BACnet Converter (MOXA UC-7101)
- Zettler Range Fire Panels (Compatible with panels supporting the MZX Speak Protocol v3.x, v4.x & v5.x)

Please note: Zettler panels on different networks will require an additional BACnet/IP Broadcast Management Device (BBMD) router that can be configured on each subnet. This will allow forwarding of received broadcast BACnet messages to the BBMD router on other subnets.

## Ordering Information

Product Code	Description
SWFIRE-ZETT	AC2000 Zettler Fire Interface License

To order contact [cem.sales@tycoint.com](mailto:cem.sales@tycoint.com) or call +44(0) 2890 456 767.

## Related Products



AC2000  
AC2000 Airport

[www.cemsys.com](http://www.cemsys.com)