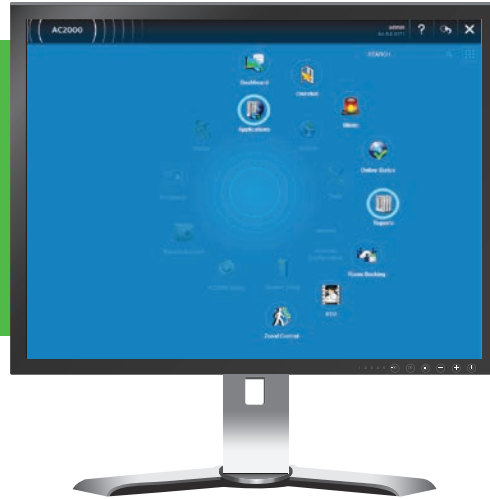


# AC2000 WEB Reports

Online reporting tool for  
Alarms & Transactions



#### Features that make a difference:

- Instant web access to a range of reports including Alarm and Transaction reporting
- Choose to email, Print or 'Save As' a CSV file
- Reports can be customised to include only the information that is needed
- Users can choose Date Ranges, Devices, Cardholders and specific card transaction outcomes
- Report layouts can be saved as templates for later use
- Users can build up a resource of multiple templates giving quick access to crucial reports
- Reports can also be scheduled to run automatically Daily, Weekly, or Monthly. The user can also choose which time the report will run
- Scheduled reports can be emailed to one or more recipients
- Ability to print directly to PDF format

AC2000 WEB Reports is a web based application that allows a system operator to run and create a range of customisable reports on all alarms and transactions generated within the AC2000 System.

System operators access the web reports through any readily available web browser such as Internet Explorer, Mozilla Firefox or Google Chrome. Report templates can be generated and saved for both alarms and transactions based on the following criteria; Date, Device, Alarm Type, Cardholder or Transaction Outcome. Reports can then be emailed to any email address either daily, weekly or monthly at specific time intervals.

Additionally reports can be generated and stored as either a .csv file or sent directly to a local printer. AC2000 WEB Reports also provides system operators with the ability to design customisable reports using database fields from the Personnel, Visitors, Company and Vehicle applications and append these to existing transactions allowing for the construction of a comprehensive and tailored report.

The benefit of the AC2000 WEB reports to customers is the ability to generate reports based on the user's own criteria. Customers have the ability to save report templates for later use and also to schedule reports to be auto-generated and emailed. This significantly reduces time spent by the system operator accessing the data required in the desired format either on or offsite.

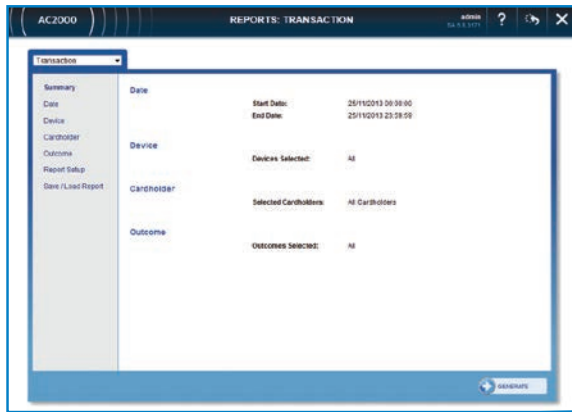
## Alarm Reporting

System operators generate reports on Alarms within the AC2000 System. Using the user friendly interface, operators specify a valid date range and the system will then find all alarms within those dates.

This can then be tailored to show only alarms from a particular device or even a specific alarm on the system. Each report can then be saved as a template and reused at a later date

## Transaction Reporting

System operators generate reports on all transactions within the AC2000 System. Using the user friendly interface, operators specify a valid date range and the system will then find all transactions within those dates.



This can then be tailored to show only transactions from a particular device or even a specific cardholder or outcome on the system. Each report can then be saved as a template and reused at a later date.

## Additional Reports

Reports can be generated to list all cardholders who have not swiped into the building in a particular time period giving managers quick access to vital staff information.

AC2000 WEB Reports also has a range of further reports including Broadcast, Card Parking, Devices, Device Access, Device

Configuration, First and Last Card Swipes, Guard Tours, Absentee, Personnel and Reader Activity, and Access Level Change Report\*.

## Customised Reporting

In addition to the transaction and alarm reports, operators have the ability to create their own customisable alarm and transaction reports using any of the AC2000 Database fields associated with the personnel, company, visitors and Vehicle applications and append these to existing transactions. These can then be saved and reused whenever required.

## Scheduling Reports

All saved report templates can be scheduled to generate and be emailed on either a daily, weekly or monthly basis. It is also possible to specify a time of day at which an email will be sent to a specified email address or a group of email addresses.



## Requirements

- AC2000 v6.4 software & upwards
- AC2000 Airport v6.6 software & upwards
- AC2000 Lite v6.4 software & upwards

\*These additional reports are available in AC2000 v6.7 upwards. Some features are available on previous versions of AC2000, please contact CEM for further details.

## Related Products



AC2000  
AC2000 Airport  
AC2000 Lite

[www.cemsys.com](http://www.cemsys.com)