

AC2000 WEB

Suite of browser based access control applications on AC2000, AC2000 Airport and AC2000 Lite



Features that make a difference:

- Web based AC2000 applications and tools.
- User friendly and intuitive web Interface.
- Access via a web browser.
- Critical system information in a centralized location.
- Access rights configured using AC2000.
- Instant notification of status reports with graphical charts.
- Allows long distance access to AC2000 status reports without AC2000 workstation software installation.
- Secure web page data transfer utilizing Hyper Text Transfer Protocol with Secure Sockets Layer (HTTPS).

Part of the AC2000 access control system, AC2000 WEB is a suite of powerful and fully integrated browser based applications.

AC2000 WEB allows users to access vital system information quickly and easily from anywhere in the world using only a web browser, such as Internet Explorer. AC2000 WEB applications are ideal for quick and efficient access to AC2000 functionality without installing any software.

AC2000 WEB gives the user an exciting experience and a rich user interface. Coupled with secure socket layer technology, AC2000 WEB brings highly secure access control and security system management into a whole new world.

Continuously developed to meet changing security needs, AC2000 WEB provides a flexible and highly stable solution for installations where security is of paramount importance.

AC2000 WEB provides CEM AC2000 system administrators with current interactive alarms tables, web reports and other essential system status updates. AC2000 WEB provides a simple means to configure and manage AC2000 without the need for previous experience in server operating system management tools, helping to lower cost of ownership and installation configuration times.

With AC2000 WEB there is no requirement for thick client software installation. AC2000 WEB is perfect for a large user base needing quick and easy access to functionality such as adding and scheduling visitors.

Powerful and versatile, AC2000 WEB has a host of features and a growing range of applications that are configurable to meet specific requirements.

AC2000 WEB applications include:
WEB Dashboard

- WEB Visitor Management* (featuring separated Booking and Card Issue permissions)
- WEB Room Booking
- WEB Reports (includes Custom Reports)
- WEB Oneshot and Broadcast
- WEB Mimic (interactive alarm event display)
- WEB Alarm & Device Status Displays
- WEB Rolling Transaction Display (RTD)
- WEB Personnel XML Export*
- WEB Personnel Image Export*

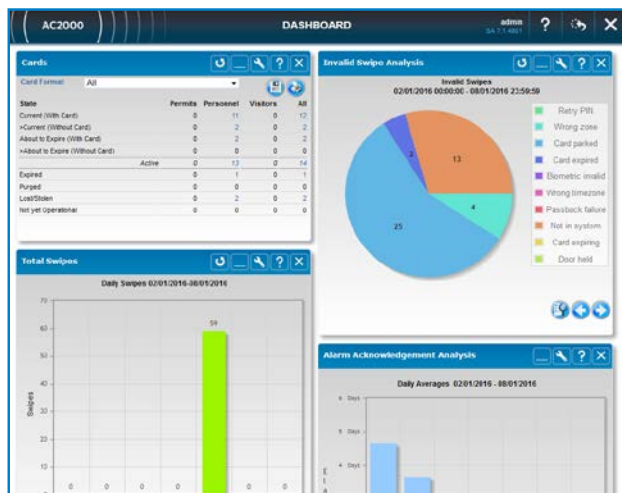
And many more!

AC2000 WEB Dashboard

AC2000 WEB Dashboard is a central data gathering application providing instant access to system critical information. The user friendly and intuitive point and click interface can be accessed via a variety of common web browsers. Information including usage statistics, trending, occupancy, top alarms,

*Additional license required

card information, licensing and system diagnostics are presented to system operators via a range of dynamic, user friendly graphs and tables.



Greater control over access to certain vital system data and the allocation of permissions to certain authorised AC2000 users for viewing the data is provided through the WEB Dashboard Allocation application. Widgets are allocated to Groups which can then be assigned to AC2000 Users.

AC2000 WEB Visitors*

AC2000 WEB Visitors provides three powerful web based tools to control and monitor visitor access from any location. The tools are a cost effective way for multiple users within a facility to manage visitors without having dedicated access control software installed.

AC2000 WEB Visitor Request* allows the addition of new visitor details and scheduling of visits. The application can be the only application allocated to a user, thereby providing the functionality to large numbers of staff securely. Doing so devolved the administration of new visits away from central security or reception staff, and out to the users requesting the visit. Requestors can upload photographs, and request the amount of access and duration of access.

AC2000 WEB Visitor Batch Request* provides the ability to add multiple visitors quickly and efficiently by importing their details from an uploaded file.

AC2000 WEB Visitor Management offers a multitude of reports, the issuing of cards and the ability to remotely upload visitor images via the web prior to a scheduled visit or capture live using a webcam (AC2000 and AC2000 Airport only) and much more. When visits are added, emails can be sent to sponsors, including calendar files in .ics format so that the sponsor can efficiently add the visit to their calendar.

AC2000 WEB Reports

AC2000 WEB Reports is a web based application that allows a system operator to run and create a range of customizable reports including; all alarms, transactions, devices, card parking, guard tours, reader activity, device configuration, absentees and much more within the AC2000 System. Using AC2000 WEB, reports can be quickly generated based on the user's own criteria. Report templates can also be saved for quick and easy use when required. The user can also choose which time a report will run

and reports can then be scheduled and emailed to any email address either daily, weekly, or monthly at specific time intervals.

AC2000 WEB Room Booking Config.

Easily configure and manage the room booking functionality on emerald terminals and Outlook calendars through the AC2000 WEB Room Booking Config. application. Rooms can be created, Microsoft Exchange servers configured, and Exchange user accounts can be added.

AC2000 WEB Oneshot

AC2000 WEB Oneshot application provides instant access to remote door opening functionality. Based on standard door open time (Oneshot), users can remotely open doors via a browser and can easily find the devices they need through the device filtering feature.

AC2000 WEB Broadcast

Where the outputs of one or more devices need to be activated, e.g. opening multiple doors or activating sounders; AC2000 WEB Broadcast application provides the ability to do so. Users can configure zones of devices, identify outputs, and define if outputs will be triggered by time, or manually. The intuitive interface also provides the ability to open and close broadcasts from the web pages, providing system owners with the ability to respond quickly and easily to site events without requiring centrally located software.

AC2000 WEB Rolling Transaction Display (RTD)

AC2000 WEB RTD provides easy web access to real time system monitoring. Users can choose from three different views, Simple List, Detailed List or Full Screen Image View. When used with emerald's 'Look at Camera' mode; the user can delay the opening of the door until they have verified the card transaction using RTD, before remotely opening the door using Oneshot or Extended Opening options.

AC2000 WEB Mimic

AC2000 WEB Mimic provides a web based alarm event display for alarm monitoring, allowing for instant alarm filtering and alarm acknowledgement/ cancel from a web browser.

AC2000 WEB Image Export

The AC2000 WEB Image Export tool allows users to export cardholder photographs. Users can choose to export the images from specific companies and departments along with added filtering for different card statuses.

AC2000 WEB ACK/CAN

AC2000 WEB ACK/CAN provides a simplistic way for system operators to acknowledge and cancel alarms directly from a web browser.

AC2000 WEB Core Features & Functionality

Access Control Operations

AC2000 WEB Dashboard

AC2000 WEB Dashboard displays are configurable and includes the following options: total card swipes, muster zone swipes, zone occupancy, cards status, top current alarms, licensing, diagnostics and system states and uptime, details of logged on usernames and status of the current backup. Analysis of invalid swipes and

alarm acknowledgement is also provided, allowing users to quickly identify problems or behaviours and rectify procedures to address them.

AC2000 WEB Reports

Instant web access to a range of reports including Alarms and Transactions is available through the AC2000 WEB Reports application. Reports can be customised to include only the information that is needed. The Scheduler feature allows reports to be timetabled for automatic generation, and users may choose to export reports via email, Print or 'Save As' a CSV file.

AC2000 WEB User Options

Through the User Options web page, System Administrators can manage unlimited user accounts on the AC2000 system. System Administrators can create account templates and change user access restrictions.

AC2000 WEB Online Status

A visual display highlighting devices which are online and offline

AC2000 WEB Card Setup

System users can add, edit and delete settings for card types, card formats and card definitions as well as batch load cards and batch validate cards for future use.

AC2000 WEB Access Permissions

Authorised users can create Access Levels and Groups providing the ability to control who gets access to where.

AC2000 WEB Commend SIPS Intercom*

Provides users with call log information and active or inactive status of all connected AC2000 intercom stations.

Alarm and Event Monitoring

AC2000 WEB Broadcast

AC2000 WEB Broadcast allows control of one or more AC2000 devices remotely using the AC2000 WEB interface. Doors can be opened or closed and relays, FET's and LED's can be energized or de-energized.

AC2000 WEB Oneshot

AC2000 WEB Oneshot application provides instant access to remote door opening functionality. Based on standard door open time (Oneshot), users can remotely open doors via a browser and can easily find the devices they need through the device filtering feature.

AC2000 WEB Rolling Transaction Display (RTD)

AC2000 WEB RTD provides easy web access to real time system monitoring. Users can choose from three different views, Simple List, Detailed List or Full Screen Image View. When used with emerald's 'Look at Camera' mode; the user can delay the opening of the door until they have verified the card transaction using RTD, before remotely opening the door using Oneshot or Extended Opening options.

AC2000 WEB ACK/CAN

AC2000 WEB ACK/CAN provides the ability for users to batch process alarms. Users can see which alarms occur most, and acknowledge or cancel them.

Enrolment

AC2000 WEB Visitor Request* (Visit Booking)

Users can request visitor access using an easy, single page interface. Visitors are stored in AC2000, so that their details do

not have to be re-entered upon each visit. Requestors can add photographs, assign sponsors, and request how much access the visitor can have and for how long. AC2000 also provides a batch request application where a delegation or party of visitors will be in attendance.

AC2000 WEB Visitor Management* (Visit and Card Management)

Scheduled visits can be approved or declined, card issued, and supporting documents added using AC2000 WEB Visitor Management. Visitor Management also provides the ability to report on scheduled or previous visits.

System Configuration

AC2000 WEB View Log Files

Any changes to data e.g. addition, removal or editing in AC2000, is recorded by the system in log files. AC2000 WEB View Log Files enables users to view all changes in detail.

AC2000 WEB System Information

System Information displays detailed information about the AC2000 system such as System ID, licences, versions and software modules installed. It also has the option to print the data or export it as a *.csv or *.pdf file.

AC2000 WEB Configured

The AC2000 WEB Configured application allows users to modify settings for the advanced system features of AC2000, as well as easily search for required parameters.

AC2000 WEB External Systems

The External Systems web page allows for easy configuration of alarms and their corresponding Set, Acknowledge and Cancel codes which are sent across Serial or Ethernet network to the third party system.

AC2000 WEB Software Update

Upload patches which add additional functionality and system configurations to your AC2000 server and device easily with the AC2000 WEB Software Update application.

AC2000 WEB Network and Mail Config.

Manage your system network and email configurations using a simple web interface.

AC2000 WEB Server Time Config.

Set Local, UTC/GMT, Time Zone and NTP servers.

AC2000 WEB System Shutdown

Protect your data integrity and server operation by using the AC2000 WEB System Shutdown application to remotely and safely invoke a server shutdown.

AC2000 WEB SMS Server Config.

Connect the recommended quad band GSM modem to AC2000 to send SMS text messages in the event of an alarm

AC2000 WEB Backup

Easily configure backups to run, and choose a range of media options and types. Use the intuitive upload and restore operations to quickly get a new system running with restored data

Tools

AC2000 WEB Transaction Load

Reload historical transactions and alarms back into the system for reporting purposes

AC2000 WEB Search Audit Logs

Web Reporting tool to search and output system audit reports.

AC2000 WEB Personnel Image Export

Export and rename images of existing cardholders. All images can be renamed using the data from the populated fields from the Personnel application.

AC2000 WEB Personnel XML Export*

Creates and exports a single .zip file containing cardholder data in XML format, and if selected, personnel images.

Emerald Configuration

AC2000 WEB File Upload

Upload adverts, custom logos* and checklists to display on an emerald device.

AC2000 WEB Remote Apps Allocation

Remote Apps Allocation is used to create groups of Remote Apps that can be made available to emerald users via the AC2000 Personnel application.

AC2000 WEB Local Access

Specified personnel may be granted the authority to assign extra access to other cardholders using an emerald terminal.

AC2000 WEB Multi-date Check

Users can configure AC2000 to employ additional verification checks when cardholders present their credential to readers such as expiry dates on security checks or construction safety certificates.

Room Booking Config.

Easily configure and manage the room booking functionality on emerald terminals and Exchange servers and users.

AC2000 WEB Check Database Updates

Check that database and subsystems databases are synchronised.

AC2000 WEB Device Defrost

Updates Firmware on Readers and other AC2000 devices

AC2000 WEB Init. Reader Controller

Initialising the Reader Controller stops its processes, and triggers new synchronisation of data.

AC2000 Setup

AC2000 WEB Licensing

AC2000 licenses for workstations, software modules, integrations, and additional functionality can be viewed and added.

AC2000 WEB Card Parking Config.

Card Parking allows access to be suspended when a card has not been used on the system for a defined period of time.

AC2000 WEB Data Housekeeping

AC2000 may be configured to unload data after a certain length of time, and save it into files which take up less server storage space.

AC2000 WEB External Systems Interface Config.

Ethernet or serial export settings for sending out data and/or alarms to exported systems may be easily configured.

AC2000 WEB Personnel Clear Down

Enables a System Administrator to remove redundant Personnel Records.

AC2000 WEB Reader Controller Config.

Select Ethernet Controller Ports to communicate via ECM to a serial reader channel.

AC2000 WEB Web Login Config.

Users may customise the number of attempts a user has before being locked out of AC2000 WEB (and AC2000 Floatbar). An authorisation message may also be assigned.

AC2000 WEB LDAP Data Import

Easily import records from the Windows Active Directory Server to the CDC.

Dashboard Widget Allocation

Create and manage groups of Dashboard widgets which may be assigned to AC2000 Web users

Requirements

- AC2000, AC2000 Airport and AC2000 Lite v7.1 software & upwards
- Some features are available on previous versions of AC2000, please contact CEM for further details.

*Items indicated require additional AC2000 licences. Most AC2000 WEB applications come as standard in AC2000, AC2000 Airport and AC2000 Lite.

Related Products



AC2000
AC2000 Airport
AC2000 Lite

www.cemsys.com