

# AC2000 Pelco VideoXpert Interface

## Pelco VideoXpert Video Management System



### Features that make a difference:

- CEM Systems AC2000 seamless integration with Pelco VideoXpert Video Management Systems (VMS)
- Associate access control alarms with digital video footage
- Live video feed activated directly from AC2000 Security Hub module
- Camera icons can be positioned in AC2000 Security Hub module alongside access control readers
- Display up to 16 individual camera feeds simultaneously in a single screen matrix
- Capture images from live or recorded video and save them to common picture formats (e.g. PNG, JPG, etc.)
- Adjust camera pan, tilt and zoom via integral software control
- Trigger presets via Video Viewer or Video Popup as a response to a reader alarm
- Receive alarms from the Pelco VideoXpert system such as Video Motion, Video Loss, Network Loss, etc.

The AC2000 video interface for Pelco VideoXpert™ provides the ability to associate access control and any other integrated sub-system alarm with digital video clips, as well as to view live camera footage. This enables AC2000 to act as the central Security Management System (SMS).

AC2000 seamlessly integrates with Pelco VideoXpert giving the operator a range of video related facilities to generate alarm reports with recorded video playback. The interface also allows system operators to view live video feed, configure live video popup on alarm, take video snapshots, and control camera positioning.

The Video popup application enables all alarms, events and associated camera footage to be displayed centrally on the AC2000 security management system, in real time as security events occur, providing cause and effect and enables the end-user to control their security responses from a single platform.

### Alarm Report With Associated Video

If an alarm event contains associated video footage, the operator can access the footage in AC2000 Security Hub via a right-click and selecting "View recorded footage" activating the Video Viewer.

Once the Video Viewer has launched, the actual footage is then uploaded from the video server. The image window will automatically display the video image from the start of the footage.

Standard video controls are available on the Alarm Viewer to Play, Pause, Fast Forward/Rewind, etc.

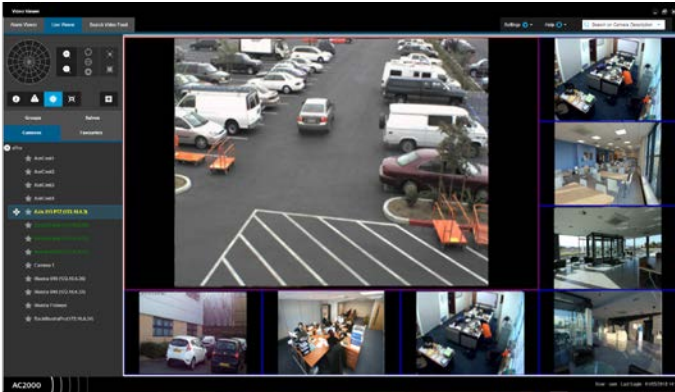
### Camera Control

A camera control facility is available for moveable cameras such as dome-based devices. The following controls are available:

- Iris and Zoom Controls
- Camera Preset and Run Abilities
- Pan + Tilt Control
- Enable and disable PTZ controls of a camera

## Live Video Feed

The operator can change the number of cameras displayed on the live viewer panel using a simple selection menu and display up to sixteen cameras simultaneously, each in its separate pane. The pane layout menu allows operators to have a main camera feed surrounded by smaller camera feeds to focus on a certain camera. Each pane can be simply configured using a drag and drop facility to place the appropriate camera into the required pane.



## Grab Frame

This option allows the operator to grab an image from the live or alarm feed and save it as a file. The image can be saved to file as a standard bitmap (BMP), PNG, JPEG, TIFF or EXIF picture file.

## Preset On Alarm

When an alarm occurs, AC2000 can instruct a camera on the Pelco VideoXpert system to move to a preset before recording takes place, providing precise footage of the alarm event.

## Pelco VideoXpert Import Tool

AC2000 Pelco VideoXpert Import Tool simplifies the setup of NVR servers for use with AC2000 Security Management System. All cameras on the VMS server are imported and configured automatically.

## Live Video Popup

The Video Popup application allows users to view alarms as they occur. The user can view the alarm in real-time without having to wait until the video footage is stored. The user can take control of PTZ cameras to track the cause of the alarm and this footage will be recorded. The camera feed can be set to switch to higher priority alarms.



## Requirements

AC2000	V6.8/ v6.9	V7.0	V7.1	V8.0 (Feature Pack 1)	V10.0
AC2000 Airport AC2000 Lite					
Pelco VideoXpert Integration uses SDK version	-	-	-	2.0.14	2.1.92

(For other AC2000 versions please contact [cem.sales@tycoint.com](mailto:cem.sales@tycoint.com))

## Ordering Information

Product Code	Description
SWWINT-VEXPERT	AC2000 Pelco VideoXpert VMS Interface

To order contact [cem.sales@tycoint.com](mailto:cem.sales@tycoint.com) or call +44(0) 2890 456 767

## Related Products



AC2000  
AC2000 Airport  
AC2000 Lite

[www.cemsys.com](http://www.cemsys.com)