



CEM Systems AC2000 RTD Online Rolling Transaction Display



Features That Make a Difference

- Online display of real time Transactions
- Highlights lost/stolen transactions and where they occur
- Door can be opened via 'Oneshot' command once operator verifies cardholder access
- Used in conjunction with CEM Systems AC2000 Security Hub and Video Viewer for complete command and control functionality
- Customised audio notification of transaction
- Customised visual icons for operators to quickly identify user privileges at a glance
- Full audit trail of transactions viewable in one window

The CEM Systems AC2000 RTD (Rolling Transaction Display) is the integrated alarm and transaction display software for AC2000 providing real-time display of all transactions that occur in the system.

The main function of AC2000 RTD is to display real-time photographic and text based information on all cardholder, visitor and vehicle transactions that occur on the CEM Systems AC2000 access control and security management system.

The AC2000 RTD application allows operators to choose how they want to view transactions – Simple List, Detail List, or Image List, along with configurable audio sounds.



AC2000 RTD provides password protected user access to ensure that only operators with the correct privileges may view the transactions

Display

A detailed display allows security to visually identify who was involved in the card transaction, where it was, when it occurred and what the outcome of the transaction was. This allows swift action to be taken by security if needed.

Two custom icons can be added for operators to quickly identify user privileges at a glance e.g. a vehicle icon for card holders who are drivers or a suitcase for those who have baggage area access in an airport environment.



Alarms

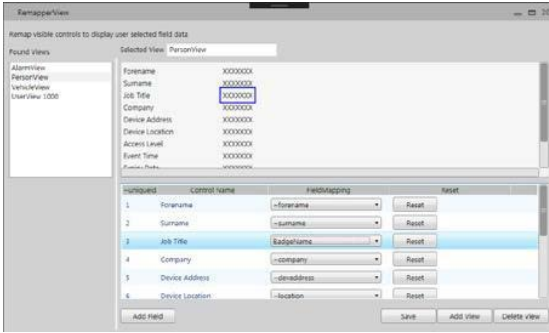
AC2000 RTD can be configured to display device alarms as well as all cardholder transactions. Alarm conditions are displayed in red as a visual indicator of urgency.

Oneshot

Through the AC2000 RTD application system operators can remotely activate any field device on the system by executing a manual 'Oneshot' command to the device. This can be used alongside the AC2000 Security Hub with a Video Viewer interface to compare live footage with the stored credentials in a high security environment, before granting access.

Multi-Screen View

AC2000 RTD features the ability to pop three windows onto different displays, allowing users to display full screen image and transaction outcome in addition to the standard view



RTD Mapping Tool

The RTD Mapping tool allows operators to customize and configure Rolling Transaction Display to their own specific requirements. The tool allows new fields to be added and existing fields to be remapped in the RTD. (Available from AC2000 v8.0 Feature Pack 1)

AC2000 WEB RTD

AC2000 WEB RTD provides easy web access to the same real time monitoring power of AC2000 RTD. AC2000 WEB RTD provides the ability to delay the opening of a door until the user has verified the card transaction with emerald 'Look at camera', before remotely opening the door using Oneshot or Extended opening.

Requirements

- Security Hub and Video Viewer available from AC2000 v7.1 Service Pack 1 and higher
- AC2000 v6.7 software and higher
- AC2000 Airport v6.7 software and higher
- AC2000 Lite v6.7 software and higher

Related Products



AC2000
AC2000 Airport
AC2000 Lite

Johnson Controls

Johnson Controls is a global diversified technology and multi-industrial leader serving a wide range of customers in more than 150 countries. Our 120,000 employees create intelligent buildings, efficient energy solutions, integrated infrastructure and next generation transportation systems that work seamlessly together to deliver on the promise of smart cities and communities. Our commitment to sustainability dates back to our roots in 1885, with the invention of the first electric room thermostat.

For additional information, please visit www.cemsys.com or follow CEM Systems on LinkedIn and Twitter.