

AC2000 Mobotix Interface



Key Features

- Associate access control alarms with digital video footage
- Live video feed activated directly from AC2000 Security Hub application
- Live video pop-up based on priority or time
- Real time visual tracking and recording during alarm conditions
- Camera icons can be positioned in Security Hub alongside access control readers
- Display up to 16 individual camera feeds simultaneously in single screen virtual matrix
- Adjust virtual camera pan, tilt, zoom and virtual presets via integral software control
- Adjust view via pattern integral software control

The AC2000 video interface for Mobotix provides the ability to associate access control alarms with Mobotix digital video clips. This enables AC2000 to act as the central Security Management System (SMS).

The video interface seamlessly integrates AC2000 with Mobotix cameras, giving the operator a range of video imaging facilities to generate alarm reports with recorded video playback. The interface also allows system operators to view live video feed and control the camera's view, current lens and display mode settings, and run presets.

The system allows a user to fully integrate the power of Mobotix video cameras into the central AC2000 Security Hub application. Security Hub enables all alarms, events and associated camera footage to be displayed centrally on the AC2000 system.

In addition, AC2000 alarms can be configured to display on the Mobotix cameras. This allows for further alarm processing, logging, and cause and effect outside of the AC2000 system.

Alarm Report with Associated Video

If an alarm event contains associated video footage, the operator can access the footage within the Security Hub which can activate the Video Viewer application.

Once Video Viewer has launched, the recorded video footage is then downloaded from the Mobotix camera and locally streamed. The viewer window will automatically display the video playback from the start of the footage. Standard video controls are available on Video Viewer to Play, Pause, Fast Forward/Rewind, skip forwards/backwards, skip to start/end, Grab Frame and Export Video to file.

Additionally system operators can view archived video footage by running alarm reports in the AC2000 Reports application.

- HD and above resolution, dual lens, panoramic, thermal or hemispheric cameras supported Take Live and Alarm video snapshots (Png, Jpeg, Gif, Tiff, Exif) with associated information file.
- Export recorded footage to file with associated information file.
- Preset On Alarm feature
- Camera Lens selection and Camera Display Mode on Alarm feature
- Audio supported for Live and Alarm video (where enabled) *
- Supports the latest Mx6 Mobotix Cameras
- Cameras can be called via SIP VOIP using the AC2000 Intercom application
- Supports SSL communications by default *

Recorded Video Search and Retrieve

Video Viewer also allows the user to search for alarms with video footage using various criteria which can then be replayed by clicking on the requested alarm detail.

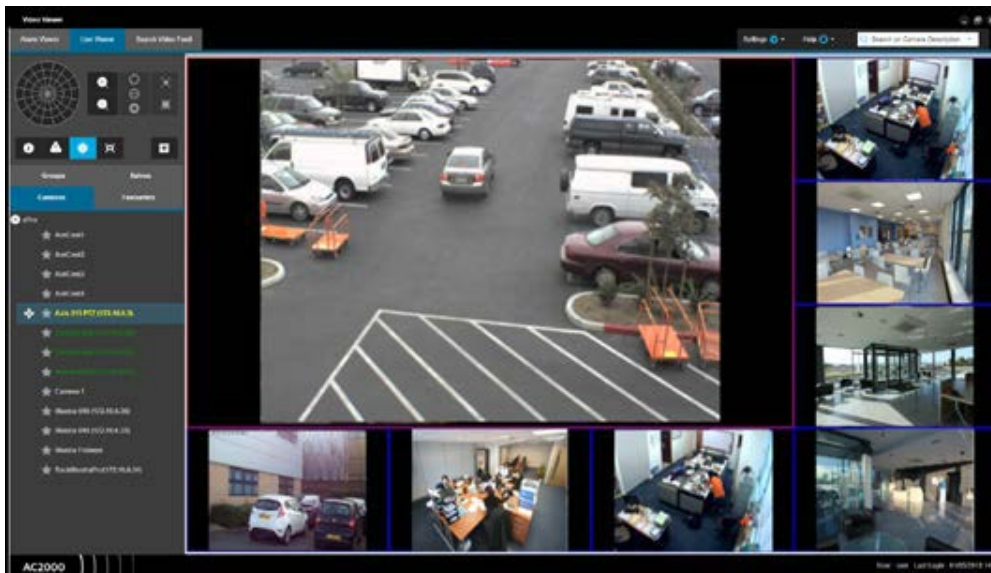
Camera Control

A camera control facility is available to provide virtual PTZ for most Mobotix cameras. The following virtual PTZ controls are available:

- Camera lens selection and display mode selection via patterns
- Zoom Controls
- Camera Preset Selection
- Pan + Tilt Control

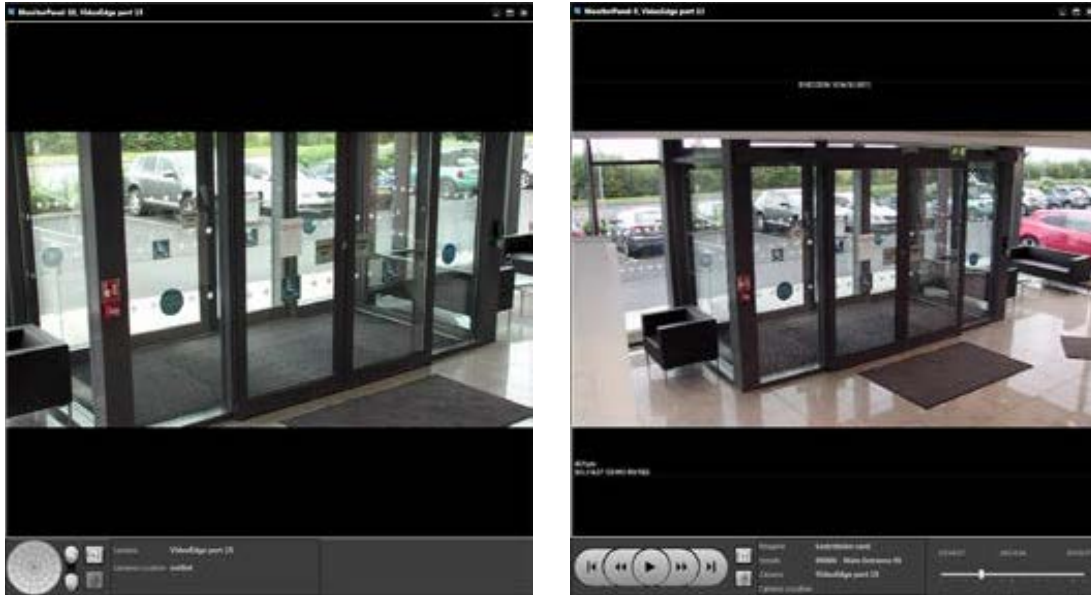
Live Video Feed

The operator can change the number of cameras displayed on the live viewer panel using a simple selection menu and display up to sixteen cameras simultaneously (including alongside other camera feeds from other video integrations). The pane layout menu allows operators to have any number of custom layouts e.g. a main camera feed surrounded by smaller camera feeds to focus on a certain camera. Each pane can be simply configured using a drag and drop facility to place the appropriate camera into the required pane.



Live Video Popup

The Video Popup application allows users to view alarms as they occur. The user can view the alarm in real time without having to wait until the video footage is stored. The user can take control of PTZ cameras to track the cause of the alarm and this footage will be recorded. The camera feed can be set to switch to higher priority alarms.



Preset & Pattern On Alarm

When an alarm occurs AC2000 can instruct a Mobotix camera to change the camera lens view/display mode and move to a preset before recording takes place, providing precise footage of the alarm event in the correct camera view.

Requirements

Product Code		
AC2000 AC2000 Airport	V8.0	V10.0
Mobotix Integration uses SDK version	1.7-ActiveX 1.0 DS Codec	1.0.2 Mobotix ActiveX Control-ActiveX 1.0 DS Codec

(For other AC2000 versions please contact cem.sales@tycoint.com)

Ordering Information

Product Code	Description
SWVINT-MOBO	AC2000 Mobotix interface

To order contact cem.sales@tycoint.com or call +44(0) 2890 456 767

Related Products



- AC2000
- AC2000 Airport

About Johnson Controls

Johnson Controls is a global diversified technology and multi-industrial leader serving a wide range of customers in more than 150 countries. Our 120,000 employees create intelligent buildings, efficient energy solutions, integrated infrastructure and next generation transportation systems that work seamlessly together to deliver on the promise of smart cities and communities. Our commitment to sustainability dates back to our roots in 1885, with the invention of the first electric room thermostat.

For additional information, please visit www.cemsys.com or follow CEM Systems on LinkedIn and Twitter.

© 2021 Johnson Controls. All rights reserved. Product offerings and specifications are subject to change without notice. Actual products may vary from photos. Not all products include all features. Availability varies by region; contact your sales representative.

CEM/B/335 Rev F