

# AC2000 Milestone Video Interface

## Milestone Professional Video



### Features that make a difference:

- CEM Systems AC2000 seamless integration with Milestone Professional Video Management Systems (VMS)
- Associate access control alarms with digital video footage
- Live video pop-up based on alarm priority or time
- Live video feed activated directly from AC2000 Security Hub module
- Camera icons can be positioned in AC2000 Security Hub module alongside access control readers
- Display up to 16 individual camera feeds simultaneously in a single screen matrix
- Capture images from live or recorded video and save them to common picture formats (e.g. PNG, JPG, etc.)
- Export recorded footage to file
- Adjust camera pan, tilt and zoom via integral software control

The AC2000 video interface for Milestone Professional provides the ability to associate access control and any other integrated sub-system alarm with digital video clips, as well as to view live camera footage. This enables AC2000 to act as the central Security Management System (SMS).

AC2000 seamlessly integrates with Milestone Professional giving the operator a range of video related facilities to generate alarm reports with recorded video playback. The interface also allows system operators to view live video feed, configure live video popup on alarm, take video snapshots, and control camera positioning.

The video popup application enables all alarms, events and associated camera footage to be displayed centrally on the AC2000 security management system, in real time as security events occur, providing cause and effect and enables the end-user to control their security responses from a single platform.

### Alarm Report With Associated Video

If an alarm event contains associated video footage, the operator can access the footage in AC2000 Security Hub by right-clicking and selecting "View recorded footage" activating Video Viewer.

Once Video Viewer has launched, the actual footage is then uploaded from the VMS server. The image window will automatically display the video image from the start of the footage.

Standard video controls are available on Video Viewer to Play, Pause, Fast Forward/ Rewind, etc. The user has an option to export video to file.

### Camera Control

A camera control facility is available for moveable cameras such as dome-based devices. The following controls are available:

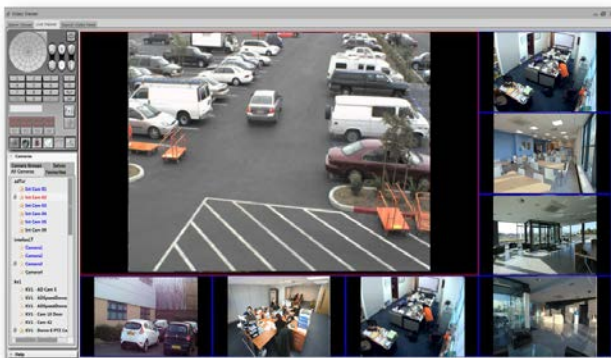
- Zoom Controls
- Camera Preset and Run Abilities
- Pan + Tilt Control

### Recorded Video Search and Retrieve

Video Viewer also allows the user to search for alarms with video footage using various criteria which can then be replayed by clicking on the requested alarm detail.

## Live Video Feed

The operator can split the video screen into 1x1, 2x2 (4), 3x3 (9) or 4x4 (16) options allowing the operator to view live footage from up to sixteen cameras simultaneously, each in its separate pane. Each pane can be simply configured using a drag and drop facility to place the appropriate camera into the required pane.

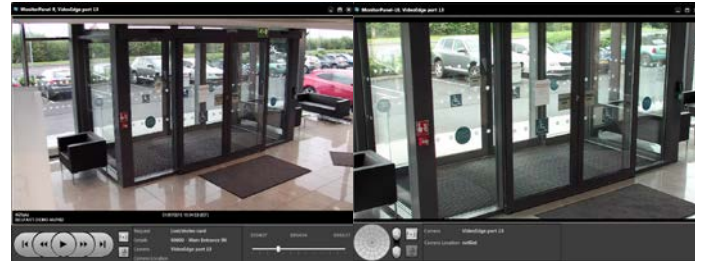


## Grab Frame

This option allows the operator to grab an image from the live or alarm feed and save it to file. The image can be saved to file as a standard bitmap (BMP), PNG, JPEG, TIFF or EXIF picture file.

## Video Popup

The Video Popup application allows users to view alarms as they occur. The user can view the alarm in real time without having to wait until the video footage is stored. The user can take control of PTZ cameras to track the cause of the alarm and this footage will be recorded. The camera feed can be set to switch to higher priority alarms.



## Requirements

- Security Hub and Video Viewer available from AC2000 v7.1 Service Pack 1 upwards
- AC2000 v7.1 and higher
- AC2000 Airport v7.1 and higher
- AC2000 Lite v7.1 and higher
- AC2000 Milestone Interface License
- Milestone 2016 SDK

## Ordering Information

Product Code	Description
SWVINT-XPROT-PRO	AC2000 Milestone XProtect Professional Video Interface

To order contact [cem.sales@tycoint.com](mailto:cem.sales@tycoint.com) or call +44(0) 2890 456 767

## Related Products



AC2000  
AC2000 Airport  
AC2000 Lite

[www.cemsys.com](http://www.cemsys.com)