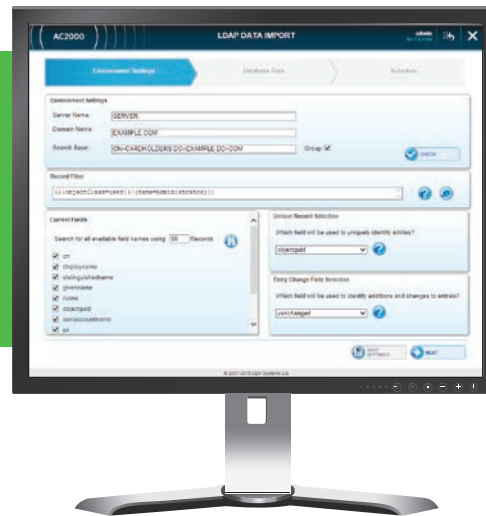


AC2000 Microsoft Active Directory Integration

Directory Synchronisation and Single Sign-On

Features that make a difference:

- Central authentication with overall IT credential management system
- Applies to both AC2000 workstation software and AC2000 WEB applications
- Automatic synchronisation of cardholder records including additions, updates, and deletions
- Web based interface
- Reduces time spent re-entering passwords for the same identity
- Improves efficiency by reducing the number of user credentials within the IT infrastructure
- Improves an administrator's ability to manage users and user configurations to all associated systems.
- Reduces administrative overhead in resetting forgotten passwords over multiple platforms and applications
- Provides users with the convenience of having to remember only a single set of credentials.
- Improves security as users find it easier to remember their credentials allowing for a more efficient user logon process



AC2000 Microsoft Active Directory integration provides tighter system security and support for corporate IT user management and authentication. Based on the Lightweight Directory Access Protocol (LDAP) the AC2000 Microsoft Active Directory integration provides AC2000 cardholder record synchronisation and Microsoft Windows Single Sign-On (SSO).

Directory Synchronisation is built into the architecture of AC2000, meaning administrators can automatically import vital personnel information into the AC2000 Personnel application to ensure that the information in both systems is precisely matched and clearances are in place. Using an intuitive web based interface for configuration, the Directory

Synchronisation processes new records, updates and deletions automatically using pre-configured parameters.

AC2000 can also synchronize the cardholder database from more than one AD group and when the card is disabled or moved from a group, it will be automatically expired in AC2000.

Single Sign-On (SSO) is a mechanism whereby a single action of user authentication and authorization can permit a user to access all computers and systems that they have access permissions for, without the need to enter multiple passwords. Access to the AC2000 system can be granted to users after using their Windows login credentials.

Configuration

Directory Synchronisation is configured using an intuitive web based interface. Steps include Active Directory Environment Settings, Field Mappings, and Scheduling.

Synchronisation can be configured to occur hourly or daily with the ability to specify exact time intervals and days of the week.

Authentication

Based on Access to the AC2000 Floatbar is granted automatically based on the users Windows Login credentials. This removes the need to re-enter a username and password

Operation

AC2000 Directory Synchronisation and Single Sign-On are based upon Active Directory LDAP Access and Kerberos Key Distribution allowing for a fully integrated AC2000 User Management and Authentication platform.

Access to the AC2000 system software can be added or removed centrally from Microsoft Active Directory as well as granting or removing cardholder access control rights.

Requirements

- AC2000 v8.0
- AC2000 Airport v8.0
- Active Directory (AD) Domain Controller (DC) running under Microsoft Windows Server (Currently tested under 2008R2x64)

Ordering Information

Product Code	Description
SWINT-DIM	AC2000 Microsoft Active Directory – Data Import
SWINT-SSO	AC2000 Microsoft Active Directory – Single Sign On

Related Products



AC2000
AC2000 Airport

www.cemsys.com