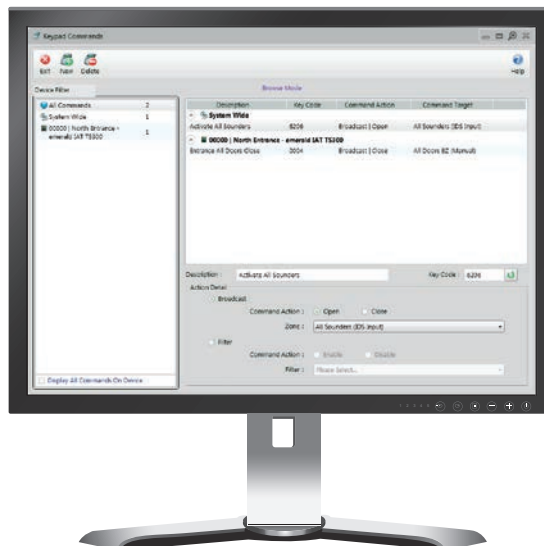


AC2000 Keypad Commands



Key Features

- Trigger outputs by entering a keypad command code on a CEM S610e Ethernet reader
- Enable/Disable outputs or filter alarms for operational efficiencies
- Multiple outputs supported (Broadcasts)
- Activated commands can be reported on AC2000 Security Hub module
- A quick method of enabling external systems to be integrated with AC2000 system
- Compatible for use with CEM S610e Ethernet reader only
- Intuitive setup & configuration application

The AC2000 Keypad Commands application enables customers to trigger outputs or filter alarms by entering pre-defined keypad command codes on a CEM S610e keypad reader. Using a CEM S610e reader, users can remotely enable/ disable alarms or outputs. As a versatile feature, AC2000 Keypad Commands is available for use on the powerful CEM AC2000 security management system.

AC2000 Keypad Commands can be used for a wide range of operational efficiencies including the disabling of motion detectors before entering a room, or for disabling PIR burglar alarms. It can also be used for green energy saving efficiencies such as the switching of lighting controls on/ off, activating air conditioning or enabling/ disabling heating on demand.

How does it work?

Authorised personnel that have been granted Keypad Command privileges simply place the S610e reader into Keypad Commands mode. Personnel are then prompted to enter their Command PIN code. They then swipe their ID card and enter an optional personal PIN code (if dual factor authentication - Card & PIN is switched on). If valid, this enables/ disables pre-defined alarm filters or opens/ closes pre-defined broadcast zones.

AC2000 Keypad Commands can be used in conjunction with the CEM AC2000 Broadcast Zones application which already enables outputs to be activated and configured through the AC2000 software platform. Using AC2000 Broadcast zones controlled doors can be remotely opened in emergency situations, if pre-configured by the AC2000 system software. Keypad commands compliments Broadcast zones as it has the added benefit of activating multiple outputs/ alarms on demand and remotely at the CEM reader, without the requirement to log onto a dedicated AC2000 workstation.

Device Configuration

The AC2000 Keypad Commands application will list the details of all of the CEM readers which allow the Keypad Commands function. When configuring the AC2000 Keypad Commands function, system administrators have the option to allow devices to be added or deleted from the device list.

They can also select which AC2000 Broadcast Zones shall be activated on Keypad Commands. Selecting which Outputs are activated is then carried out directly using the AC2000 Broadcast application. AC2000 keypad Commands complements Broadcast Zones by offering customers the added benefit of being able to triggering outputs remotely at the door (using a CEM keypad reader).

Energy saving & cost efficiencies

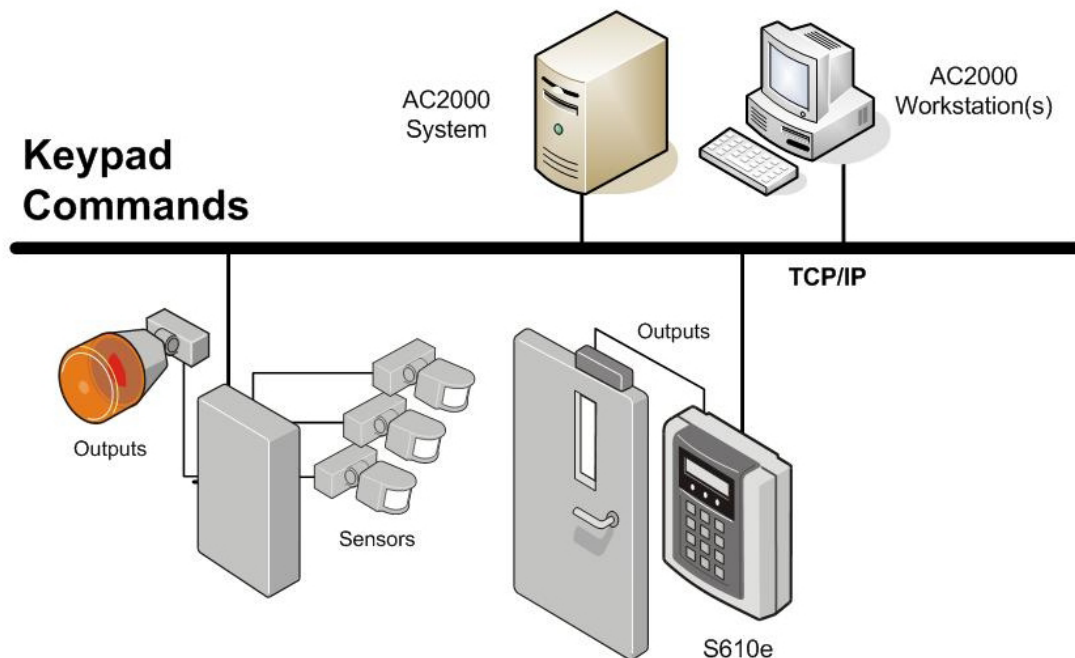
AC2000 Keypad Commands can be used for green energy saving purposes such as the switching of lighting controls on/ off, activating air conditioning or enabling/disabling heating on demand. Keypad Commands module can also be used to filter PIR alarms whilst in a zone, or to switch equipment on and off.

CEM Ethernet readers supported

AC2000 Keypad Commands is only available for use with CEM S610e Ethernet card reader with keypad.

Requirements

- Security Hub and Video Viewer available from AC2000 v7.1 Service Pack 1 upwards
- CEM S610e Ethernet Reader with keypad
- AC2000 Airport v6.6 software & upwards
- AC2000 v6.3 software & upwards
- AC2000 Lite v6.4 software & upwards
- AC2000 Keypad Commands is available as standard in AC2000 software license



Related Products



- AC2000
- AC2000 Airport
- AC2000 Lite

About Johnson Controls

Johnson Controls is a global diversified technology and multi-industrial leader serving a wide range of customers in more than 150 countries. Our 120,000 employees create intelligent buildings, efficient energy solutions, integrated infrastructure and next generation transportation systems that work seamlessly together to deliver on the promise of smart cities and communities. Our commitment to sustainability dates back to our roots in 1885, with the invention of the first electric room thermostat.

For additional information, please visit www.cemsys.com or follow CEM Systems on LinkedIn and Twitter.

© 2021 Johnson Controls. All rights reserved. Product offerings and specifications are subject to change without notice. Actual products may vary from photos. Not all products include all features. Availability varies by region; contact your sales representative.

CEM/B/216 Rev H

The power behind **your mission**