

AC2000 Intellex Interface

American Dynamics Intellex Digital Video Management System



Key Features

- CEM AC2000 seamless integration with American Dynamics Digital Intellex Video Management Systems
- Associate access control alarms with digital video footage
- Live video feed activated directly from AC2000 Security Hub module
- Camera icons can be positioned in AC2000 Security Hub module alongside access control readers
- Display up to 16 individual camera feeds simultaneously in a single screen matrix
- Capture images from live video and saved them to common picture format (BMP)
- Adjust camera pan, tilt and zoom via integral software control
- Compatible with American Dynamics Intellex range of DVMS (Classic and Ultra)

The AC2000 Video interface for American Dynamics Intellex provides the ability to associate access control alarms with digital video clips.

The Video Configuration Module seamlessly integrates AC2000 with Digital Video Management Systems (DVMS) giving the operator a range of video imaging facilities to generate alarm reports with associated video, view live video feed, control camera positioning, control image quality and capture images to file.

The system allows a user to fully integrate the power of a CCTV and DVMS network into the AC2000 Security Hub system. This network can be composed of a number of DVMS servers, plus a network of CCTV cameras located throughout a site.

AC2000 Video Interface has been designed to integrate easily with the full range of Intellex from American Dynamics.

Alarm Report with Associated Video

If an alarm event contains associated Video footage, the operator can access the footage by clicking on the film reel symbol shown alongside each alarm in the Device Report screen activating the Video Viewer.

Once the Video Viewer has launched, the actual footage is then uploaded from the Intellex VMS server. The image window will automatically display the video image from the start of the footage.

Standard video controls are available on the Video Alarm Viewer to Play, Pause, Fast Forward/Rewind, Full Screen etc. Footage details are also displayed in the accompanying window and the user has an option to export the video to file.

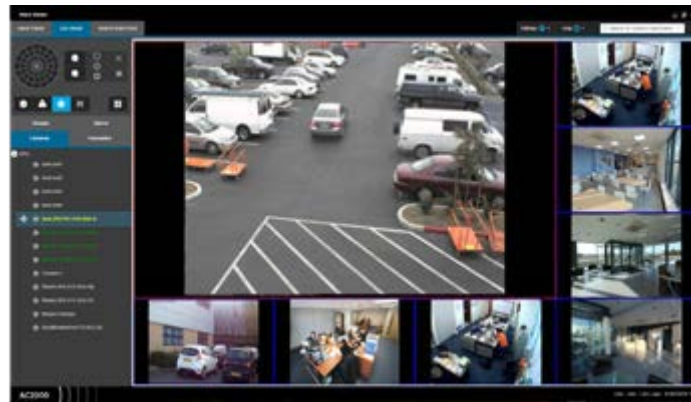
Camera Control

A camera control facility is available for moveable cameras such as dome-based devices. The following controls are available:

- Iris, Zoom And Focus Controls
- Camera Preset Set and Run Abilities
- Pan + Tilt Control
- Auto – Iris Selection

Live Video Feed

The operator can change the number of cameras displayed on the live viewer panel using a simple selection menu and display up to sixteen cameras simultaneously, each in its separate pane. The pane layout menu allows operators to have a main camera feed surrounded by smaller camera feeds to focus on a certain camera. Each pane can be simply configured using a drag and drop facility to place the appropriate camera into the required pane.



Grab Frame

This option allows the operator to grab an image from the live or alarm feed and save it as a file. The image can be saved to file as a standard bitmap (BMP), PNG, JPEG, TIFF or EXIF picture file.

Live Video Popup

The Video Popup application allows users to view alarms as they occur. The user can view the alarm in real time without having to wait until the video footage is stored. The user can take control of PTZ cameras to track the cause of the alarm and this footage will be recorded. The camera feed can be set to switch to higher priority alarms.



Import Tool

AC2000 Import Tool simplifies the setup of DVR servers for use with AC2000 Security Management System. All cameras on the VMS server are imported and configured automatically.

DVMS Compatibility

- American Dynamics – Intellex Ultra Range
- American Dynamics – Intellex Classic Range
- American Dynamics – Intellex LT Range
- American Dynamics – Intellex IP Range

Requirements

AC2000 AC2000 Airport AC2000 Lite	V10.0, 10.1, 10.2, 10.3
Integration uses SDK version	5.2

(For other AC2000 versions please contact cem.sales@tycoint.com)

Ordering Information

Product Code	Description
SWDVR-AD	AC2000 American Dynamics Intellex Interface

To order contact cem.sales@tycoint.com or call +44(0) 2890 456 767

Related Products



- AC2000
- AC2000 Airport
- AC2000 Lite

About Johnson Controls

Johnson Controls is a global diversified technology and multi-industrial leader serving a wide range of customers in more than 150 countries. Our 120,000 employees create intelligent buildings, efficient energy solutions, integrated infrastructure and next generation transportation systems that work seamlessly together to deliver on the promise of smart cities and communities. Our commitment to sustainability dates back to our roots in 1885, with the invention of the first electric room thermostat.

For additional information, please visit www.cemsys.com or follow CEM Systems on LinkedIn and Twitter.

© 2021 Johnson Controls. All rights reserved. Product offerings and specifications are subject to change without notice. Actual products may vary from photos. Not all products include all features. Availability varies by region; contact your sales representative.

CEM/B/107 Rev M

The power behind **your mission**