

# AC2000 Genetec Security Center Video Interface



## Features That Make a Difference:

- Associate Access Control alarms with digital video footage.
- Live video feed activated directly from AC2000 Security Hub application.
- Live video pop-up based on priority or time.
- Use Video Actions for real time visual tracking and recording during alarm conditions.
- Camera icons can be positioned in the AED module alongside access control readers.
- Display up to 16 individual camera feeds simultaneously in a single screen virtual matrix.
- Adjust camera pan, tilt, and zoom via integral software control.
- Take Live Video snapshots.
- Export recorded footage to file.

The AC2000 video interface for Genetec Security Center provides the ability to associate access control alarms with Genetec Security Center digital video clips. This enables AC2000 to act as the central Security Management System (SMS).

The AC2000 DVR Viewer module seamlessly integrates AC2000 with Genetec Security Center, giving the operator a range of video imaging facilities to generate alarm reports with recorded video playback. The interface also allows system operators to view live video feed and control camera positioning and presets.

This integration allows a user to fully integrate the power of a Genetec Security Center into the central AC2000 Security Hub application. AC2000 Security Hub enables all alarms, events and associated camera footage to be displayed centrally on the AC2000 system.

### Alarms with associated video

If an alarm event contains associated video footage, the operator can access the footage within the AC2000 Security Hub which activates the DVR Viewer.

Once the DVR Viewer has launched, the recorded video footage is then streamed from Genetec Security Center system. The viewer window will automatically display the video playback from the start of the footage. Standard video controls are available on the DVR Viewer to play, pause, fast forward/rewind, export video to a file and take snapshots. Additionally system operators can view archived video footage by running alarm reports in the AC2000 Extended Reports application.

### Recorded Video Search and Retrieve

The DVR Viewer also allows the user to search for alarms with video footage using various criteria which can then be replayed by clicking on the requested alarm detail.

### DVR Import Tool

The AC2000 DVR Import Tool simplifies the setup of Genetec Security Center servers for use with AC2000 Security Management System. All cameras on the Genetec server are imported and configured automatically.

### DVR Video Configuration

The DVR Video Configuration tool allows users to set up video alarm actions for cameras.

## Camera control

A camera control facility is available for moveable cameras such as dome based devices. The following controls are available:

- Iris Control
- Zoom In and Out
- Camera Preset Selection & Run Patterns
- Pan + Tilt Control

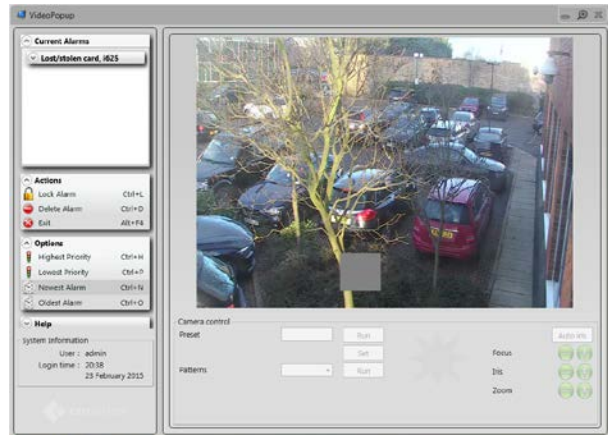


## Live video feed

In DVR Viewer, video screens can be split into 1x1, 2x2 (4), 3x3 (9), or 4x4 (16) options allowing the operator to view live footage from up to 16 cameras simultaneously, each in its separate pane.

## Video Popup

The Video Popup application allows users to view alarms as they occur. The user can view the alarm in real-time without having to wait until the video footage is stored. The user can take control of PTZ cameras to track the cause of the alarm and this footage will be recorded. Multiple alarms can be selected and sorted by priority.



## Requirements

- Security Hub and Video Viewer available from AC2000 v7.1 Service Pack 1 upwards
- AC2000 v6.8 software & upwards
- AC2000 Airport v6.8 software & upwards
- Genetec Security Center SDK Version 5.2 SR4 with Omnicast IP Surveillance
- Genetec SDK Connections License\*

\* The Genetec Security Center SDK connections license is applied once per AC2000 Genetec Security Center Interface. One SDK connection is required by each of the following applications: AC2000 alarm service, AC2000 DVR Viewer, AC2000 Video Popup and the AC2000 DVR Import. Total number of required Genetec Security Center SDK connection licenses will depend on how many AC2000 DVR application connections will be simultaneously established with the Genetec Security Center server. The Genetec Security Center SDK connections licenses should be obtained from Genetec quoting part number: GSC-1SDK-CEM-AC2000.

## Ordering Information

Product Code	Description
SWINT-GENETSC	AC2000 Genetec Security Center Interface

## Related Products



AC2000  
AC2000 Airport

[www.cemsys.com](http://www.cemsys.com)