

# AC2000 Genetec Security Center Video Interface



## Features That Make a Difference:

- Associate Access Control alarms with digital video footage.
- Live video feed activated directly from AC2000 Security Hub application.
- Live video popup based on priority or time.
- Use Video Actions for real time visual tracking and recording during alarm conditions.
- Camera icons can be positioned in Security Hub module alongside access control readers
- Display up to 16 individual HD camera feeds simultaneously in a single screen virtual matrix.
- Adjust camera pan, tilt, and zoom via integral software control.
- Take Live Video snapshots.
- Export recorded footage to g64 or asf video files with associated information file.
- Imported cameras can be automatically sorted into separate Camera Groups based on the hierarchy of Areas or Doors they are placed under in Security Center.

The AC2000 video interface for Genetec Security Center provides the ability to associate access control alarms with Genetec Security Center digital video clips. This enables AC2000 to act as the central Security Management System (SMS).

AC2000 seamlessly integrates with Genetec Security Center giving the operator a range of video related facilities to generate alarm reports with recorded video playback. The interface also allows system operators to view live video feed, configure live video popup on alarm, take video snapshots, and control camera positioning.

This integration allows a user to fully integrate the power of a Genetec Security Center into the central AC2000 Security Hub application. AC2000 Security Hub enables all alarms, events and associated camera footage to be displayed centrally on the AC2000 system.

## Alarms with Associated Video

If an alarm event contains associated video footage, the operator can access the footage within the Security Hub which can activate the Video Viewer application.

Once the Video Viewer has launched, the recorded video footage is then streamed from Genetec Security Center system. The viewer window will automatically display the video playback from the start of the footage. Standard video controls are available on the Video Viewer to Play, Pause, Fast Forward/Rewind, Grab Frame and 'Export Video to File'. Additionally system operators can view archived video footage by running alarm reports in the AC2000 Extended Reports application.

## Recorded Video Search and Retrieve

The Video Viewer also allows the user to search for alarms with video footage using various criteria which can then be replayed by clicking on the requested alarm detail.

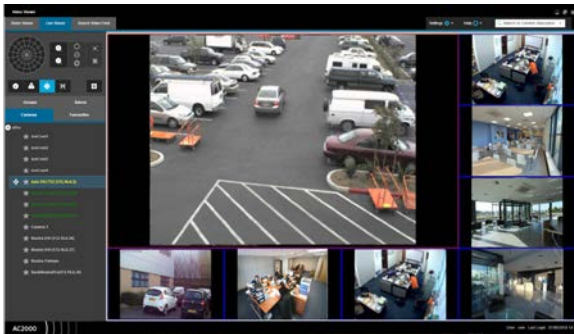
## Video Configuration

The AC2000 Video Configuration tool simplifies the setup of Genetec Security Center servers for use with AC2000 Security Management System. All cameras on the Genetec server are imported and configured automatically into camera groups according to their hierarchy on the Genetec server. Video Configuration allows users to set up video alarm actions for cameras.

## Camera Control

A camera control facility is available for moveable cameras such as dome based devices. The following controls are available:

- Iris and Focus Control
- Zoom In and Out
- Camera Preset Selection & Run Patterns
- Pan + Tilt Control



## Live Video Feed

The operator can change the number of cameras displayed on the live viewer panel using a simple selection menu and display up to sixteen cameras simultaneously. The pane layout menu allows operators to have a main camera feed surrounded by smaller camera feeds to focus on a certain camera. Each pane can be simply configured using a drag and drop facility to place the appropriate camera into the required pane.

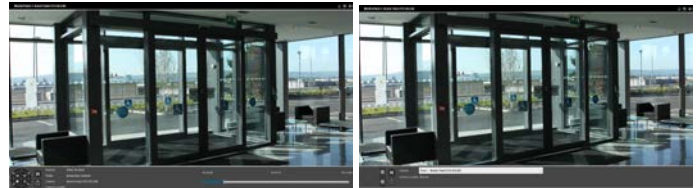
## Ordering Information

Product Code	Description
SWINT-GENETSC	AC2000 Genetec Security Center Interface

To order contact [cem.sales@tycoint.com](mailto:cem.sales@tycoint.com) or call +44(0) 2890 456 767

## Video Popup

The Video Popup application allows users to view alarms as they occur. The user can view the alarm in real-time without having to wait until the video footage is stored. The user can take control of PTZ cameras to track the cause of the alarm and this footage will be recorded. The camera feed can be set to switch to higher priority alarms.



## Requirements

AC2000 AC2000 Airport AC2000 Lite	V6.8/ v6.9	V7.0	V7.1	V8.0	V10.0
Genetec Security Center Integration uses SDK version	5.2 SR9	5.2 SR9	5.2 SR9	5.7 SR1	5.7 SR1

- Genetec SDK Connections License\*
- Security Hub and Video Viewer available from AC2000 v7.1 Service Pack 1 upwards  
(For other AC2000 versions please contact [cem.sales@tycoint.com](mailto:cem.sales@tycoint.com))

\* The Genetec Security Center SDK connections license is applied once per AC2000 Genetec Security Center Interface. One SDK connection is required by each of the following applications: AC2000 alarm service, AC2000 Video Viewer, AC2000 Video Popup and the AC2000 Video Config. Total number of required Genetec Security Center SDK connection licenses will depend on how many AC2000 DVR application connections will be simultaneously established with the Genetec Security Center server. The Genetec Security Center SDK connections licenses should be obtained from Genetec quoting part number: GSC-1SDK-CEM-AC2000.

## Related Products



AC2000  
AC2000 Airport

[www.cemsys.com](http://www.cemsys.com)