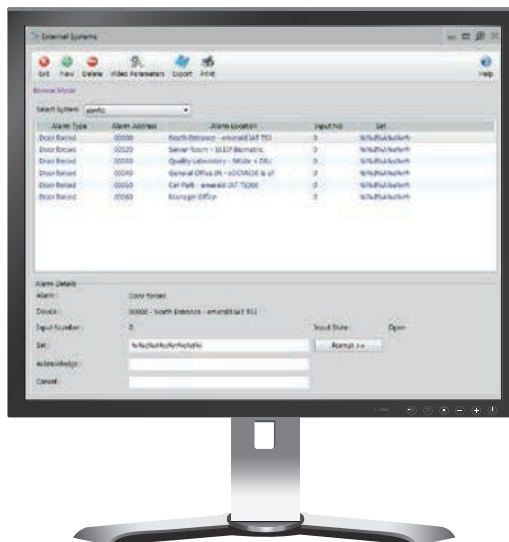


AC2000 External Systems Interface



Key Features

- Generic third party systems interface tool
- Operates over serial RS232 or Ethernet TCP/IP
- Supports ASCII characters
- AC2000 Graphical User Interface for easy configuration
- Batch configuration upload from file to save set up time*
- Real time operation
- Removes the need for any customised software development when interfacing third party systems
- Interfacing is quick, easy and configurable by the operator

The AC2000 External Systems Interface removes the need for custom software development when an interface to a third party system is required. It provides the user with a quick and easy way of configuring their own interface.

The AC2000 External Systems Interface works by sending user defined messages when alarms are triggered, acknowledged or cancelled on the AC2000 access control system. This provides a generic one way interface to any third party system that can accept ASCII strings and has a remote command interface.

The messages can be sent via a serial cable (RS232) or via Ethernet (TCP/IP). Interfaces are configured using the intuitive AC2000 user interface and will operate in real time, giving a seamless solution to many third party interfacing requirements.

Simple to Configure

AC2000 External Systems interface is simple to configure. The user simply sets out whether the ASCII strings will be sent over Ethernet TCP/IP or Serial RS232. They then simply select the alarm source within AC2000 and input the message(s) to be sent, either when the alarm is 'Set', 'Acknowledged' or 'Cancelled'.

External Systems Examples

The AC2000 External Systems Interface can be used in many scenarios, such as interfacing to CCTV, DVR (Digital Video Recorders), NVR (Network Video Recorders) and Building Management Systems (BMS). Examples of which include, switching a camera to a preset or instructing a DVR to begin recording upon an AC2000 access control alarm. Also, sending alarm information to a BMS or third party command and control system, in real time. AC2000 External Systems interface is suitable for any system that can accept text based ASCII strings.

Usage

The primary benefit of the AC2000 External Systems interface is that no interface software development is required. Administrators simply configure the interface using the AC2000 software. This offers customers the flexibility to seamlessly integrate the AC2000 access control system with third party systems of their choice. The Set, Acknowledge and Cancel messages entered by the system administrator are ASCII text strings. It is not necessary to configure all three messages for each alarm. The administrator can specify with ASCII characters whatever commands the external system requires i.e. AC2000 can use the third party system's commands/protocol.

Requirements

- AC2000 v6.4 software & upwards
- AC2000 Airport v6.4 software & upwards
- AC2000 Lite v6.4 software & upwards

* Only supported from version 8.0

Related Products



- AC2000
- AC2000 Lite
- AC2000 Airport

About Johnson Controls

Johnson Controls is a global diversified technology and multi-industrial leader serving a wide range of customers in more than 150 countries. Our 120,000 employees create intelligent buildings, efficient energy solutions, integrated infrastructure and next generation transportation systems that work seamlessly together to deliver on the promise of smart cities and communities. Our commitment to sustainability dates back to our roots in 1885, with the invention of the first electric room thermostat.

For additional information, please visit www.cemsys.com or follow CEM Systems on LinkedIn and Twitter.

© 2021 Johnson Controls. All rights reserved. Product offerings and specifications are subject to change without notice. Actual products may vary from photos. Not all products include all features. Availability varies by region; contact your sales representative.

CEM/B/304 Rev D