

# AC2000 exacqVision Interface

## exacq IP and Hybrid Network Video Recorders (NVR)



### Key Features

- Seamlessly integrate AC2000 with exacqVision Video Management System (VMS) servers
- Associate access control alarms with digital video footage
- Playback alarm videos, take snapshots and download video clips of recorded and live footage
- View alarm videos as they occur, control the camera and sort alarms by priority in Video Popup
- Define video alarm actions in AC2000 Video Configuration
- Display up to 16 individual camera feeds simultaneously using the Video Viewer
- Control pan, tilt, and zoom (PTZ) cameras and move to specific presets via AC2000

The AC2000 exacqVision Interface enables AC2000 to act as a flexible and fully integrated Security Management System (SMS). It provides the ability to define video alarm actions, view live footage as alarms occur and control cameras and run camera presets.

The AC2000 Video Configuration module seamlessly integrates AC2000 with exacqVision Video Management System servers. This will give operators the ability to define video alarm actions, search alarm feeds and playback recorded video from alarms.

This high-level interface allows AC2000 to receive video alarms such as Video-Loss, Video-Motion and DVR Offline generated in the exacqVision system and processes these alarms in AC2000 Security Hub, Alarm Viewer or Video Popup.

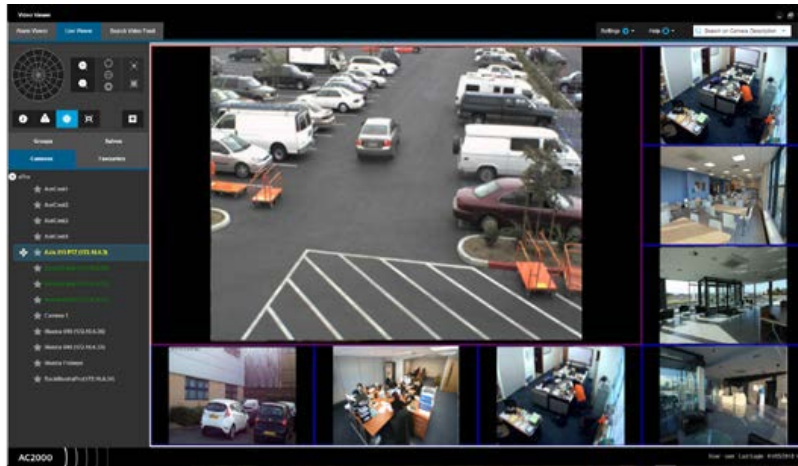
AC2000 Security Hub enables all alarms, events and associated camera footage to be displayed centrally on the AC2000 system.

### Alarms with Associated Video

If an alarm event contains associated video footage, the operator can access the footage within the AC2000 Security Hub application which will activate a Video Viewer. Once the Video Viewer has launched, the actual video footage is then uploaded from the exacqVision VMS servers. The viewer window will automatically display the video playback from the start of the footage. Standard video controls are available on Video Viewer to Play, Pause, Fast Forward/Rewind, skip forwards/backwards, skip to start/end, Grab Frame and Export Video to file. Additionally system operators can view archived video footage by running alarm reports in the AC2000 Reports application.

## Video Viewer

In Video Viewer, live video footage from up to 16 individual cameras through registered NVRs. The application allows PTZ cameras to be controlled using the Video Viewer's standardised control system and cameras can be moved to specific locations using the Set and Run Preset buttons. Alarm Viewer allows the operator to playback recorded video footage of alarms selected from the Search Alarm Feed section. Video Viewer also has facilities to download video clips and take snapshots from live footage and recorded alarm videos.



## Import Tool

AC2000 exacqVision Import Tool simplifies the setup of exacqVision VMS servers for use with AC2000 Security Management System. All cameras on the Exacq server are imported and configured automatically.

## Camera Control

A camera control facility is available for PTZ cameras such as dome-based devices. The following controls are available:

- Zoom In and Out
- Camera Preset Set and Run Abilities
- Pan + Tilt Control

## Live Video Feed

The operator can change the number of cameras displayed on the live viewer panel using a simple selection menu and display up to sixteen cameras simultaneously, each in its separate pane. The pane layout menu allows operators to have a main camera feed surrounded by smaller camera feeds to focus on a certain camera. Each pane can be simply configured using a drag and drop facility to place the appropriate camera into the required pane.

## Live Video Popup

The Video Popup application allows users to view alarms as they occur. The user can view the alarm in real-time without having to wait until the video footage is stored. The user can take control of PTZ cameras to track the cause of the alarm and this footage will be recorded. Multiple alarms can be selected and sorted by priority.



## Ordering Information

Product Code	Description
SWNVR-EX	exacqVision Interface

To order contact [cem.sales@tycoint.com](mailto:cem.sales@tycoint.com) or call +44(0) 2890 456 767

## Requirements

Security Hub and Video Viewer available from AC2000 v7.1 Service Pack 1 upwards

AC2000	
AC2000 Airport	V10.0, 10.1, 10.2, 10.3
AC2000 Lite	
Integration uses SDK version	1.33

(For other AC2000 versions please contact [cem.sales@tycoint.com](mailto:cem.sales@tycoint.com))

## Related Products



- AC2000
- AC2000 Lite
- AC2000 Airport

---

## About Johnson Controls

Johnson Controls is a global diversified technology and multi-industrial leader serving a wide range of customers in more than 150 countries. Our 120,000 employees create intelligent buildings, efficient energy solutions, integrated infrastructure and next generation transportation systems that work seamlessly together to deliver on the promise of smart cities and communities. Our commitment to sustainability dates back to our roots in 1885, with the invention of the first electric room thermostat.

For additional information, please visit [www.cemsys.com](http://www.cemsys.com) or follow CEM Systems on LinkedIn and Twitter.

© 2021 Johnson Controls. All rights reserved. Product offerings and specifications are subject to change without notice. Actual products may vary from photos. Not all products include all features. Availability varies by region; contact your sales representative.

CEM/B/353 Rev F

The power behind **your mission**

