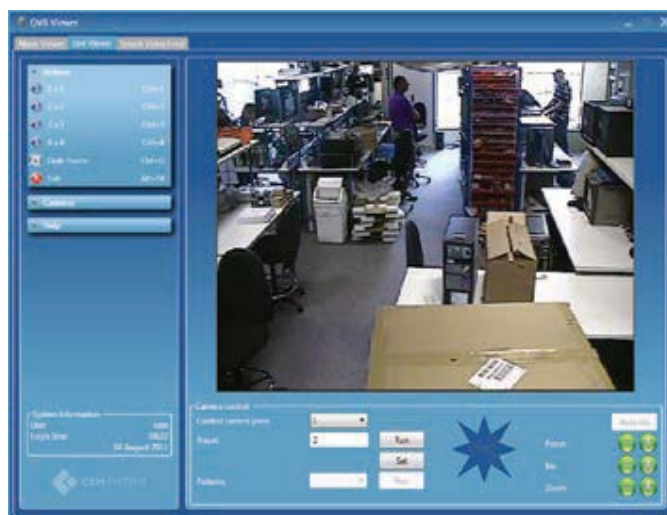


AC2000 Bosch VRM Interface Bosch Video Recording Manager



Key Features

- Seamless integration with Bosch Video products.
- Associate access control alarms with digital video footage
- Live video feed activated directly from AC2000 Security Hub application
- Live video pop-up based on priority or time
- Camera icons can be positioned in Security Hub module alongside access control readers
- Display up to 16 individual camera feeds simultaneously in a single screen virtual matrix
- Adjust camera pan, tilt, and zoom via integral software control

The AC2000 video interface for Bosch provides the ability to associate access control alarms with Bosch digital video clips. This enables AC2000 to act as the central Security Management System (SMS).

The AC2000 'Video Viewer' module seamlessly integrates AC2000 with Bosch, giving the operator a range of video imaging facilities to generate alarm reports with recorded video playback. The interface also allows system operators to view live video feed and control camera positioning and presets.

The system allows a user to fully integrate the power of a Bosch Video system into the central AC2000 Security Hub application. Security Hub enables all alarms, events and associated camera footage to be displayed centrally on the AC2000 system.

AC2000 Bosch Video Interface has been designed to integrate easily with Bosch encoders either directly or via Video Recording Manager (VRM).

Alarms with associated video

If an alarm event contains associated video footage, the operator can access the footage within the Security Hub which will activate the Video Viewer.

Once the Video Viewer has launched, the actual video footage is then streamed from the Bosch system. The viewer window will automatically display the video playback from the start of the footage. Standard video controls are available on the Video Viewer to Play, Pause, and Fast Forward/Rewind. Additionally system operators can view archived video footage by running alarms reports in the AC2000 Extended Reports application.

Recorded Video Search and Retrieve

The Video Viewer also allows the user to search for alarms with video footage using various criteria which can then be replayed by clicking on the requested alarm detail.

Camera control

A camera control facility is available for moveable cameras such as dome-based devices. The following controls are available:

- Iris, Zoom and Focus Controls
- Camera Preset Selection
- Pan + Tilt Control
- Auto – Iris Selection

Live video feed

The operator can split the video screen into 1x1, 2x2 (4), 3x3 (9) or 4x4 (16) options allowing the operator to view live footage from up to sixteen cameras simultaneously, each in its separate pane. Each pane can be simply configured using a drag and drop facility to place the appropriate camera into the required pane.

Live video pop-up

Using the Video Popup Application, live video is available based on alarm priority or time. This allows instant access to live video for certain alarms and is used with a queuing system. This allows the operator to easily view live feeds when multiple alarms are received.

Requirements

- Security Hub and Video Viewer available from AC2000 v7.1 Service Pack 1 upwards
- AC2000 SE v6.1 software & upwards

Bosch Video Requirements

Interface developed against Bosch SDK v4.4.3 which supports the following products:

- VideoJet X10/X40*
- VIP X1*
- VideoJet X20
- VideoJet 10/100/8000/8008
- VIP 10/1000
- AutoDome IP
- FlexiDome IP
- Dinion IP

* Highlighted products have been tested with AC2000 Bosch VRM Interface. For clarification on support for other devices please contact CEM Systems

Ordering Information

Product Code	Description
SWNVR – BO	AC2000 Bosch VRM Interface

Related Products



- AC2000
- AC2000 Airport
- AC2000 Lite

About Johnson Controls

Johnson Controls is a global diversified technology and multi-industrial leader serving a wide range of customers in more than 150 countries. Our 120,000 employees create intelligent buildings, efficient energy solutions, integrated infrastructure and next generation transportation systems that work seamlessly together to deliver on the promise of smart cities and communities. Our commitment to sustainability dates back to our roots in 1885, with the invention of the first electric room thermostat.

For additional information, please visit www.cemsys.com or follow CEM Systems on LinkedIn and Twitter.

© 2021 Johnson Controls. All rights reserved. Product offerings and specifications are subject to change without notice. Actual products may vary from photos. Not all products include all features. Availability varies by region; contact your sales representative.

CEM/B/143 Rev C