

# AC2000 Bosch VMS Interface

## Bosch Video Management System



### Key Features

- CEM Systems AC2000 seamless integration with Bosch Video Management Systems (VMS)
- Associate access control alarms with digital video footage
- Live video feed activated directly from AC2000 Security Hub application
- Live video popup based on priority or time
- Real time visual tracking and recording during alarm conditions
- Camera icons can be positioned in Security Hub module alongside access control readers
- Display up to 16 individual camera feeds simultaneously in a single screen virtual matrix
- Adjust camera pan, tilt, and zoom via integral software control

The AC2000 video interface for BOSCH Video Management System (VMS) provides the ability to associate access control alarms with BOSCH VMS digital video clips. This enables AC2000 to act as the central Security Management System (SMS).

The AC2000 Video Viewer module seamlessly integrates AC2000 with BOSCH VMS, giving the operator a range of video imaging facilities to generate alarm reports with recorded video playback. The interface also allows system operators to view live video feed and control camera positioning.

The system allows a user to fully integrate the power of a BOSCH VMS into the central AC2000 Security Hub application. Security Hub enables all alarms, events and associated camera footage to be displayed centrally on the AC2000 system.

Access control alarms can also be sent to BVMS by use of virtual inputs on the BVMS. These can then be used to trigger events on the Bosch operator client.

- Capture images from live or recorded video and save them to common picture formats (e.g. PNG, JPG, etc.)
- Trigger presets via Video Viewer or Video Popup or as a response to an alarm

## Integrated solution for both access control & biometrics

AC2000 Biometric Enrolment provides a single Biometric and card validation process using the AC2000 Personnel screen. When a new card is added, cardholders present their finger for scanning which is then stored on the AC2000 central database. This offers cost savings and eradicates the requirement to have a separate biometric software process in addition to the access control enrolment process.

## Alarms with Associated Video

If an alarm event contains associated video footage, the operator can access the footage within the Security Hub which can activate the Video Viewer application.

Once the Video Viewer has launched, the recorded video footage is then streamed from the BOSCH VMS system. The viewer window will automatically display the video playback from the start of the footage. Standard video controls are available on the Video Viewer to Play, Pause, Fast Forward/Rewind, Grab Frame and 'Export Video to File'.

Additionally system operators can view archived video footage by running alarm reports in the AC2000 Reports application.

## Recorded Video Search and Retrieve

The Video Viewer also allows the user to search for alarms with video footage using various criteria which can then be replayed by clicking on the requested alarm detail.

## Camera Control

A camera control facility is available for moveable cameras such as dome-based devices. The following controls are available:

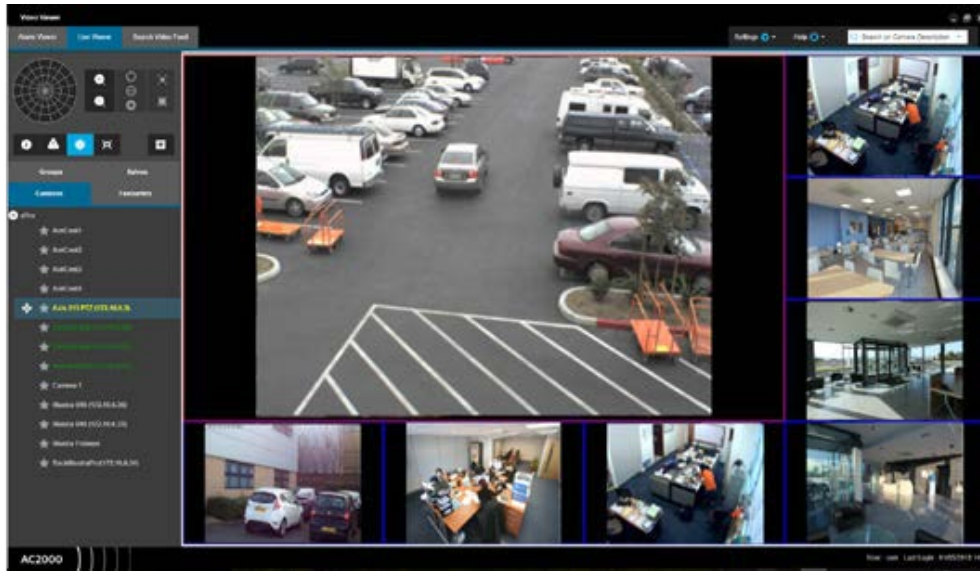
- Zoom Controls
- Camera Preset Selection
- Pan + Tilt Control
- Focus and Iris Control

## Live Video Feed

The operator can change the number of cameras displayed on the live viewer panel using a simple selection menu and display up to sixteen cameras simultaneously. The pane layout menu allows operators to have a main camera feed surrounded by smaller camera feeds to focus on a certain camera. Each pane can be simply configured using a drag and drop facility to place the appropriate camera into the required pane.

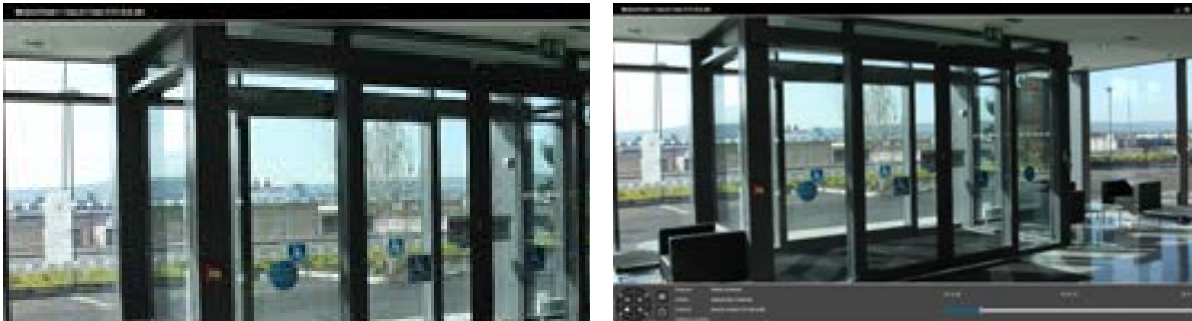
## Live Video Popup

The Video Popup application allows users to view alarms as they occur. The user can view the alarm in real time without having to wait until the video footage is stored. The user can take control of PTZ cameras to track the cause of the alarm and this footage will be recorded. The camera feed can be set to switch to higher priority alarms.



### Preset On Alarm

When an alarm occurs AC2000 can instruct a camera on the BOSCH VMS system to move to a preset before recording takes place, providing precise footage of the alarm event.



NB: This AC2000 interface will not operate on a Windows 32bit operating system

### Requirements

AC2000	V6.8/ v6.9	V7.0	V7.1	V8.0	V10.0
AC2000 Airport					
Bosch VMS					
Integration uses SDK version	-	4.5.1	4.5.1	7.5	7.5

To order contact [cem.sales@tycoint.com](mailto:cem.sales@tycoint.com) or call +44(0) 2890 456 767

## Ordering Information

Product Code	Description
SWINT-BOSCHVMS	AC2000 BOSCH VMS Interface

To order contact [cem.sales@tycoint.com](mailto:cem.sales@tycoint.com) or call +44(0) 2890 456 767

## Related Products



- AC2000
- AC2000 Airport

---

## About Johnson Controls

Johnson Controls is a global diversified technology and multi-industrial leader serving a wide range of customers in more than 150 countries. Our 120,000 employees create intelligent buildings, efficient energy solutions, integrated infrastructure and next generation transportation systems that work seamlessly together to deliver on the promise of smart cities and communities. Our commitment to sustainability dates back to our roots in 1885, with the invention of the first electric room thermostat.

For additional information, please visit [www.cemsys.com](http://www.cemsys.com) or follow CEM Systems on LinkedIn and Twitter.

© 2021 Johnson Controls. All rights reserved. Product offerings and specifications are subject to change without notice. Actual products may vary from photos. Not all products include all features. Availability varies by region; contact your sales representative.

CEM/B/344 Rev E