

AC2000 ADTVR Interface

American Dynamics Embedded Video Recorders



Key Features

- Associate access control alarms with recorded digital video
- Live video feed activated directly from AC2000 Security Hub application
- Live video pop-up based on alarm priority or time
- Receive alarms from the ADTVR system
- Camera icons can be positioned in AC2000 Security Hub module alongside access control readers
- Display up to 16 individual camera feeds simultaneously in a single screen virtual matrix
- Adjust camera pan, tilt, and zoom via integral software control
- Video action, camera preset on alarm
- Export video snapshots and clips from AC2000 software

The AC2000 video interface for American Dynamics ADTVR provides the ability to associate access control alarms with digital video clips and to view live camera footage. This enables AC2000 to act as the central Security Management System (SMS).

The AC2000 Video Configuration module seamlessly integrates AC2000 with the ADTVR, giving the operator a range of video imaging facilities to generate alarm reports with recorded video playback. The interface also allows system operators to view live video feed, configure live video popup on alarm and control camera positioning and presets.

The high level two-way interface allows a user to fully integrate the power of an American Dynamics ADTVR video system into the central AC2000 Security Hub application. The AC2000 Security Hub module enables all alarms, events and associated camera footage to be displayed centrally on the AC2000 system, including the ability to receive alarms from the TVR such as motion detect, tampering and video loss.

ADTVR Embedded Video Recorders

The ADTVR is an embedded DVR, making it very reliable and competitively priced. ADTVR offers the latest features such as high quality recording, long storage times, remote access and alarm reporting.

Alarms with associated video

When an alarm event is associated with recorded video, the operator can recall the video by activating the Video Viewer from within the AC2000 Security Hub application. Once the Video Viewer has launched, the recorded video is then uploaded from the ADTVR system. The viewer window will automatically display the video playback from the start of the event. Standard video controls are available on the Video Viewer to Play, Pause, and Fast Forward/Rewind. Recorded video can be exported to a file if required or a simple snapshot picture can be saved.

Additionally, system operators can access archived video directly from within AC2000 Extended Reports, using links included within the alarm table reports provided by the application.

Recorded Video Search and Retrieve

The Video Viewer also allows the user to search for alarms with video, using various criteria which can then be replayed by clicking on the requested alarm detail.

Camera control

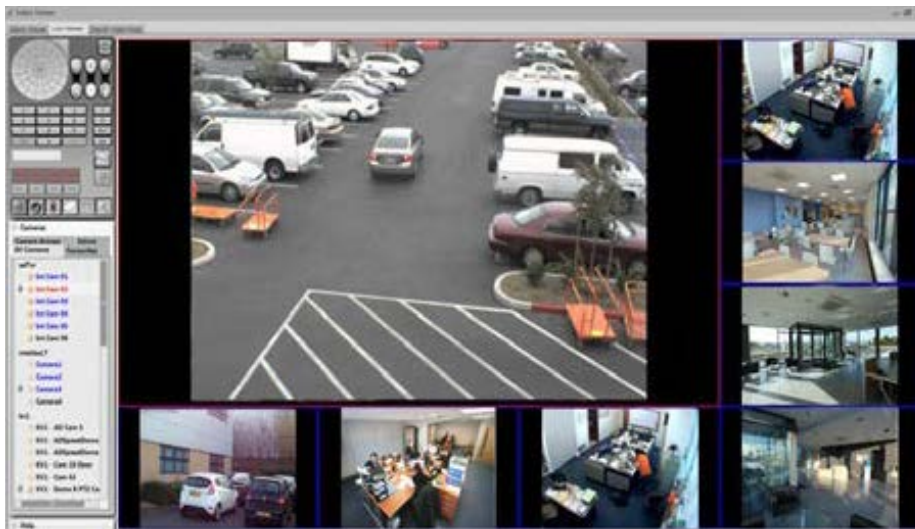
A camera control facility is available for moveable cameras such as dome-based devices.

The following controls are available with supported cameras:

- Zoom In and Out, Camera Preset
- Selection, Pan + Tilt Control and focus

Live video feed

The operator can split the video screen into 1x1, 2x2 (4), 3x3 (9), or 4x4 (16) options allowing the operator to view live video feeds from up to sixteen cameras simultaneously, each in its separate pane. Each pane can be simply configured using a drag and drop facility to place the appropriate camera into the required pane, this can then be saved allowing instant viewing of the configured matrix each time the application is opened.



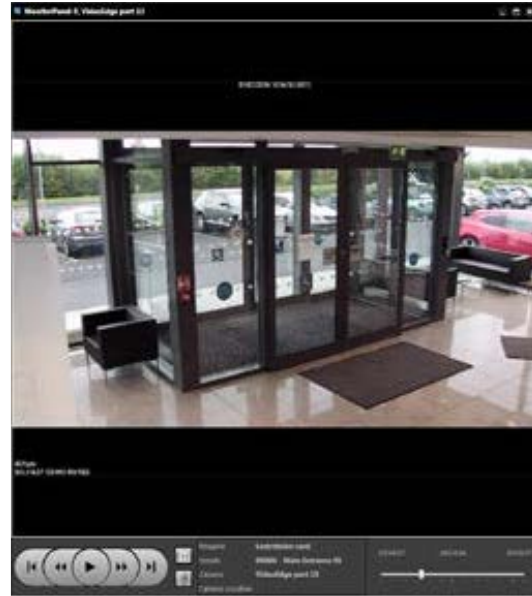
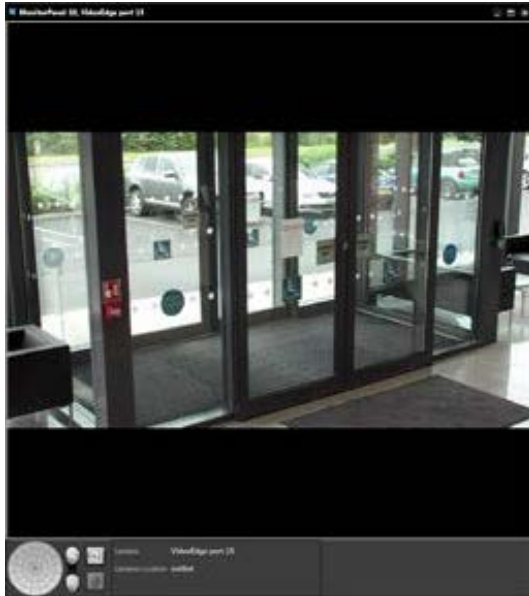
Live video pop-up

The AC2000 video pop-up display is activated automatically by configured events. When activated events can be sorted by alarm priority or time. This allows instant access to live video for certain alarms and is used with a queuing system. This allows the operator to easily view live feeds when multiple alarms are received.

Micro-Viewers

AC2000 Security Hub incorporates a seamless video integration interface which enables live and recorded video footage for specific configured alarms to be displayed. The Security Hub video interface features two 'Micro Viewer' applications which can be easily accessed.

A camera control facility is available in live video 'Micro-Viewer' for PTZ cameras such as dome-based devices. The available controls include: Zoom In and Out, Camera Preset Set and Run Abilities as well as Pan + Tilt Control. (Available AC2000 v8.0 upwards)



DVR Import Tool*

AC2000 DVR Import Tool simplifies the setup of TVR servers for use with AC2000 Security Management System.

All cameras on the TVR server are imported and configured automatically.

*DVR Import Tool is available in AC2000, AC2000 Airport and AC2000 Lite v6.8 and upwards.

Requirements

- AC2000 v8.0 software & upwards
- AC2000 Lite v8.0 software & upwards
- AD SDK v4.9

(For other versions please contact cem.sales@tycoint.com)

Ordering Information

Product Code	Description
SWADTVR-AD	AC2000 American Dynamics ADTVR Interface

Related Products



- AC2000
- AC2000 Lite
- AC2000 Airport

About Johnson Controls

Johnson Controls is a global diversified technology and multi-industrial leader serving a wide range of customers in more than 150 countries. Our 120,000 employees create intelligent buildings, efficient energy solutions, integrated infrastructure and next generation transportation systems that work seamlessly together to deliver on the promise of smart cities and communities. Our commitment to sustainability dates back to our roots in 1885, with the invention of the first electric room thermostat.

For additional information, please visit www.cemsys.com or follow CEM Systems on LinkedIn and Twitter.

© 2021 Johnson Controls. All rights reserved. Product offerings and specifications are subject to change without notice. Actual products may vary from photos. Not all products include all features. Availability varies by region; contact your sales representative.

CEM/B/331 Rev G

The power behind **your mission**