

AC2000 VideoEdge Interface

American Dynamics VideoEdge Network Video Recorder



Features that make a difference:

- CEM AC2000 seamless integration with American Dynamics VideoEdge Network Video Recorder
- Associate access control alarms with digital video footage
- Live video feed activated directly from AC2000 Security Hub Application
- Live video pop-up based on alarm priority or time
- Export video clips
- Take video snapshots
- Receive alarms from the VideoEdge system such as Video Motion
- Camera icons can be positioned in Security Hub module alongside access control readers
- Display up to 16 individual camera feeds simultaneously in a single screen virtual matrix
- Adjust camera pan, tilt, and zoom via integral software control

The AC2000 video interface for American Dynamics VideoEdge Network Video Recorders (NVR) provides the ability to associate access control alarms with digital video clips, as well as to view live camera footage. This enables AC2000 to act as the central Security Management System (SMS).

AC2000 seamlessly integrates with VideoEdge, giving the operator a range of video related facilities to generate alarm reports with recorded video playback. The interface also allows system operators to view live video feed, configure live video popup on alarm, export video playback clips, take video snapshots, and control camera positioning and presets.

This high level two-way interface allows a user to fully integrate the power of an American Dynamics VideoEdge system into the central AC2000 Security Hub application.

AC2000 Security Hub module enables all alarms, events and associated camera footage to be displayed centrally on the AC2000 security management system, including the ability to receive alarms from the VideoEdge such as video analytics.

VideoEdge Network Video Recorder

VideoEdge Network Video Recorder is a powerful, high-performance VMS designed to record and manage video from standard, high-definition and megapixel cameras.

Alarms with associated video

If an alarm event contains associated video footage, the operator can access the footage within the AC2000 Security Hub application which will activate a Video Viewer.

Once the Video Viewer has launched, the actual video footage is then downloaded from the VideoEdge system. The viewer window will automatically display the video playback from the start of the footage.

Standard video controls are available on the Video Viewer to Play, Pause, and Fast Forward/Rewind. This footage can then be exported to a file if required or a simple snapshot picture can be saved.

Additionally system operators can view archived video footage by running alarms reports in the AC2000 Extended Reports application.

Recorded Video Search and Retrieve

The Video Viewer also allows the user to search for alarms with video footage using various criteria which can then be replayed by clicking on the requested alarm detail.

Camera control

A camera control facility is available for moveable cameras such as dome-based devices. The following controls are available:

- Zoom In and Out
- Camera Preset Set and Run Abilities
- Pan + Tilt

Live video feed

The operator can split the video screen into 1x1, 2x2 (4), 3x3 (9), or 4x4 (16) options allowing the operator to view live footage from up to sixteen cameras simultaneously, each in its separate pane.



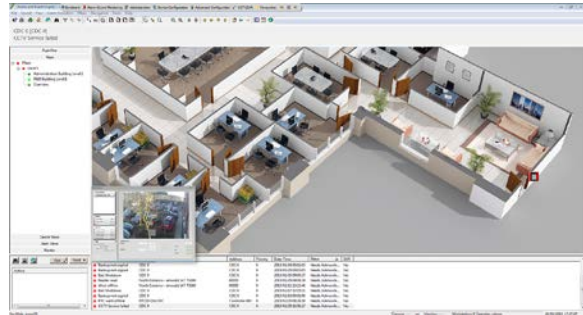
Each pane can be simply configured using a drag and drop facility to place the appropriate camera into the required pane, this can then be saved allowing instant viewing of the configured matrix each time the application is opened.

Ordering Information

Product Code	Description
SWVNVR-AD	AC2000 American Dynamics VideoEdge Interface

Live video pop-up

Using the AC2000 Video Popup application, live video popup is available based on alarm priority or time. This allows instant access to live video for certain alarms and is used with a queuing system. This allows the operator to easily view live feeds when multiple alarms are received.



DVR Import Tool*

AC2000 DVR Import Tool simplifies the setup of NVR servers for use with AC2000 Security Management System.

All cameras on the NVR server are imported and configured automatically.

*DVR Import Tool is available in AC2000, AC2000 Airport and AC2000 Lite v6.8 and upwards.

Requirements

- Security Hub and Video Viewer available from AC2000 v7.1 Service Pack 1 upwards
- AC2000 Airport v6.6 software & upwards
- AC2000 v6.4 software & upwards
- AC2000 Lite v6.4 software & upwards

Related Products



AC2000
AC2000 Airport
AC2000 Lite

www.cemsys.com