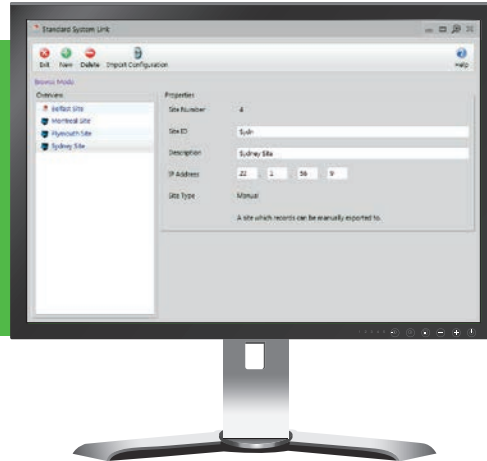


# AC2000 Standard System Link

## Multi-Site AC2000 Server Link



### Features that make a difference:

- Multiple AC2000 Systems connected together
- Associate Cardholder details shared across multiple sites, eradicating the need for travelling personnel to have extra cards or to re enrol per site
- Live central database sharing but with continued independent access control at each site
- Support for unlimited sites within the link
- Card details can be auto exported to global server
- Display optional system wide alarm and transaction monitoring and reporting.
- 'Global Transaction Report' & 'Global Alarm Report'
- Available with AC2000, AC2000 Lite v6.4 & upwards, AC2000 Airport v6.6 & upwards

The AC2000 Standard System Link application offers the ability to link multiple standalone CEM AC2000 systems together. Designed for companies with multiple sites spread across geographical areas, Standard System Link allows security and IT managers to globally share card holder details/records.

With Standard System Link, card holders that are required to travel between different sites typically do not need to be issued with a second card or be enrolled on the remote site(s) system. The AC2000 Standard System Link software removes administrative duplication, allowing for seamless multi-site access control.

Corporate security managers have central control over the integrated AC2000 systems, whilst allowing regional offices to independently maintain/control the local server databases.

Standard System Link also offers the option to centrally collate all cardholder records, alarms and transactions from all linked sites via a Standard System Link Global Server. This allows for the central monitoring and reporting of global text based alarms and transactions.

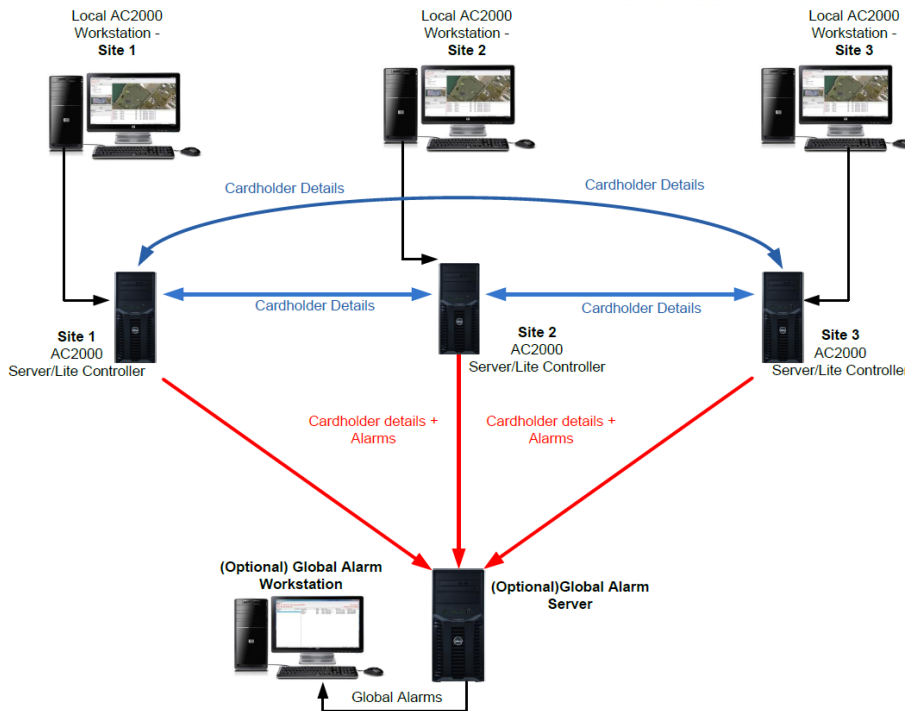
With the ability to add unlimited sites within the link, the AC2000 Standard System Link application allows for seamless cardholder use over a globally installed access control system.

### Link multi site offices but maintain local AC2000 database independence

Although all sites are linked, each local AC2000 server operates as a completely independent system, and maintains its own separate database. Local facility managers have responsibility for local site access control, whilst corporate security managers have access to global cardholder and text based alarm details via the Global Server. Using the Standard System Link Server Connector Tool the administrator can establish connections to multiple AC2000 servers from a single workstation, one connection at a time.

### Global sharing of cardholder data / Central database storage

ID card enrolment can take place at any AC2000 SE or Lite Controller, with the ability to export cardholder details to any other linked system servers/controllers. Sharing data among systems allows travelling staff to gain access to other sites without having to re-enrol or be issued with another ID card; saving duplication, administration time and saving global card costs. Data can be automatically exported and synchronised among sites approximately every 30 minutes (excluding fingerprint templates, photographs and signatures).



## Global alarm & transaction reporting

Standard System Link also offers the option to globally report on all the alarms and transactions that have occurred on linked sites via the Global Server if required. A replica of all site cardholders, transactions and alarms can be automatically sent to a nominated master database for global reporting and auditing purposes.

## Unlimited sites can be linked

Such is the capability of the Standard System Link application that an unlimited amount of sites can be seamlessly linked together. This offers customers the benefit of a cost effective scalable linked system without future expansion restrictions.

Another benefit of Standard System Link is that the module can be implemented at any time. Customers can install separate AC2000 systems initially and then globally link when the timing or strategy is appropriate.

## Requirements

- AC2000 Airport v6.6 & upwards
- AC2000 v6.4 & upwards
- AC2000 Lite v6.4 & upwards

Please note: All Standard System Linked sites must have a unique range of hotstamp numbers

## Ordering Information

Product Code	Description
SWSSL	Standard System Link
SYS/200/SSL	Standard System Link Global Alarm Server

## Related Products



AC2000  
AC2000 Airport  
AC2000 Lite

[www.cemsys.com](http://www.cemsys.com)