

AC2000 Bosch VMS Interface

Bosch Video Management System



Features That Make a Difference:

- Associate access control alarms with digital video footage
- Live video feed activated directly from AC2000 Security Hub application
- Live video pop-up based on priority or time
- Real time visual tracking and recording during alarm conditions
- Camera icons can be positioned in Security Hub module alongside access control readers
- Display up to 16 individual camera feeds simultaneously in a single screen virtual matrix
- Adjust camera pan, tilt, and zoom via integral software control

The AC2000 video interface for BOSCH Video Management System (VMS) provides the ability to associate access control alarms with BOSCH VMS digital video clips. This enables AC2000 to act as the central Security Management System (SMS).

The AC2000 Video Viewer module seamlessly integrates AC2000 with BOSCH VMS, giving the operator a range of video imaging facilities to generate alarm reports with recorded video playback. The interface also allows system operators to view live video feed and control camera positioning.

The system allows a user to fully integrate the power of a BOSCH VMS into the central AC2000 Security Hub application. Security Hub enables all alarms, events and associated camera footage to be displayed centrally on the AC2000 system.

Access control alarms can also be sent to BVMS by use of virtual inputs on the BVMS. These can then be used to trigger events on the Bosch operator client.

Alarms with associated video

If an alarm event contains associated video footage, the operator can access the footage within the Security Hub which can activate the DVR Viewer.

Once the Video Viewer has launched, the recorded video footage is then streamed from the BOSCH VMS system. The alarm viewer window will automatically display the video playback from the start of the footage. Standard video controls are available on the Video Viewer to Play, Pause and Fast Forward/Rewind.

Additionally system operators can view archived video footage by running alarm reports in the AC2000 Extended Reports application.

Recorded Video Search and Retrieve

The Video Viewer also allows the user to search for alarms with video footage using various criteria which can then be replayed by clicking on the requested alarm detail.

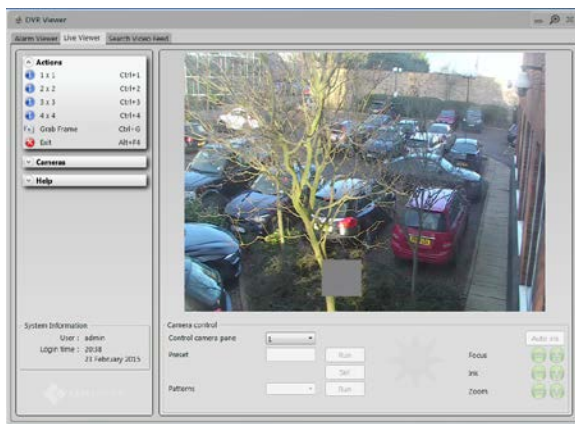
Camera control

A camera control facility is available for moveable cameras such as dome-based devices. The following controls are available:

- Zoom Controls
- Camera Preset Selection
- Pan + Tilt Control
- Focus and Iris Control

Live video feed

The operator can split the video screen into 1x1, 2x2 (4), 3x3 (9) or 4x4 (16) options allowing the operator to view live footage from up to sixteen cameras simultaneously, each in its separate pane.



Each pane can be easily configured using a drag and drop facility to place the appropriate camera into the required pane.

Live video pop-up

Using the video pop-up application, live video is available based on alarm priority or time. This allows instant access to live video for certain alarms and is used with a queuing system, allowing the operator to easily view live feeds when multiple alarms are received.

Preset On Alarm

When an alarm occurs AC2000 can instruct a camera on the BOSCH VMS system to move to a preset before recording takes place, providing precise footage of the alarm event.

Requirements

- Security Hub and Video Viewer available from AC2000 v7.1 Service Pack 1 upwards
- AC2000 Airport v6.7 software & upwards
- AC2000 v6.7 software & upwards
- Bosch Video Management System SDK v5.5

NB: This AC2000 interface will not operate on a Windows 32bit operating system

Ordering Information

Product Code	Description
SWINT-BOSCHVMS	AC2000 BOSCH VMS Interface

Related Products



AC2000
AC2000 Airport

www.cemsys.com