

# AC2000 ADTVR Interface

## American Dynamics Embedded Video Recorders



### Features That Make a Difference:

- Associate access control alarms with recorded digital video
- Live video feed activated directly from AC2000 Alarm Event Display (AED) application
- Live video pop-up based on alarm priority or time
- Receive alarms from the ADTVR system
- Camera icons can be positioned in AC2000 AED module alongside access control readers
- Display up to 16 individual camera feeds simultaneously in a single screen virtual matrix
- Adjust camera pan, tilt, and zoom via integral software control
- Video action, camera preset on alarm
- Export video snapshots and clips from AC2000 software

The AC2000 video interface for American Dynamics ADTVR provides the ability to associate access control alarms with digital video clips and to view live camera footage. This enables AC2000 to act as the central Security Management System (SMS).

The AC2000 Video Configuration module seamlessly integrates AC2000 with the ADTVR, giving the operator a range of video imaging facilities to generate alarm reports with recorded video playback. The interface also allows system operators to view live video feed, configure live video popup on alarm and control camera positioning and presets.

The high level two-way interface allows a user to fully integrate the power of an American Dynamics ADTVR video system into the central AC2000 AED (Alarm Event Display) application. The AC2000 AED module enables all alarms, events and associated camera footage to be displayed centrally on the AC2000 system, including the ability to receive alarms from the TVR such as motion detect, tampering and video loss.

### ADTVR Embedded Video Recorders

The ADTVR is an embedded DVR, making it very reliable and competitively priced. ADTVR offers the latest features such as high quality recording, long storage times, remote access and alarm reporting.

### Alarms with associated video

When an alarm event is associated with recorded video, the operator can recall the video by activating the DVR Viewer from within the AC2000 AED (Alarm Event Display) application. Once the DVR Viewer has launched, the recorded video is then uploaded from the ADTVR system. The viewer window will automatically display the video playback from the start of the event. Standard video controls are available on the VR Viewer to Play, Pause, and Fast Forward/Rewind. Recorded video can be exported to a file if required or a simple snapshot picture can be saved.

Additionally, system operators can access archived video directly from within AC2000 Extended Reports, using links included within the alarm table reports provided by the application.

### Recorded Video Search and Retrieve

The DVR Viewer also allows the user to search for alarms with video, using various criteria which can then be replayed by clicking on the requested alarm detail.

## Camera control

A camera control facility is available for moveable cameras such as dome-based devices.

The following controls are available with supported cameras:

- Zoom In and Out, Camera Preset
- Selection, Pan + Tilt Control and focus

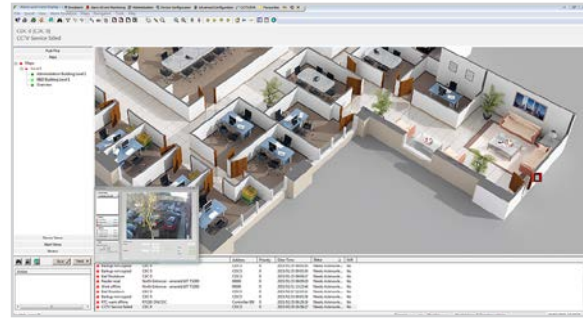
## Live video feed



The operator can split the video screen into 1x1, 2x2 (4), 3x3 (9), or 4x4 (16) options allowing the operator to view live video feeds from up to sixteen cameras simultaneously, each in its separate pane. Each pane can be simply configured using a drag and drop facility to place the appropriate camera into the required pane, this can then be saved allowing instant viewing of the configured matrix each time the application is opened.

## Live video pop-up

The AC2000 video popup display is activated automatically by configured events. When activated events can be sorted by alarm priority or time. This allows instant access to live video for certain alarms and is used with a queuing system. This allows the operator to easily view live feeds when multiple alarms are received.



## DVR Import Tool\*

AC2000 DVR Import Tool simplifies the setup of TVR servers for use with AC2000 Security Management System.

All cameras on the TVR server are imported and configured automatically.

\*DVR Import Tool is available in AC2000, AC2000 Airport and AC2000 Lite v6.8 and upwards.

## Requirements

- AC2000 v6.1 software & upwards

## Ordering Information

Product Code	Description
SWADTVR-AD	AC2000 American Dynamics ADTVR Interface

## Related Products



AC2000  
AC2000 Airport  
AC2000 Lite

[www.cemsys.com](http://www.cemsys.com)