



Victoria and Stobhill Hospitals

CEM Systems supplied the new £100 million Victoria and Stobhill hospitals in Scotland with a fully integrated IP security solution using the CEM AC2000 security management system.

CEM AC2000 provides a reliable and scalable access control and security management system. This solution helps protect patients, staff and the new premises, while providing a fully future proof security system.

Installed by ADT Glasgow, AC2000 also provided the integration platform for American Dynamics Intellex DVR's (Digital Video Recorders) and Honeywell Galaxy Intruder Alarm Panels, providing a fully integrated security management solution for the hospitals.

CASE SUMMARY

Location:

Glasgow, Scotland

Systems Installed:

AC2000 access control

AC2000 Alarm Event Display (AED)

AC2000 VIPPS (Visual Imaging Pass Production System)

Hardware Installed:

190 Etherprox readers

CEM DIU 230 (high power PoE+) Door Interface Unit)

Integration with:

American Dynamics Intellex DVR

Honeywell Galaxy Intruder Panels

Introduction

Glasgow hospitals, Stobhill and Victoria are two of Scotland's largest hospitals, each featuring four floors covering 30,000 square metres and providing care for 400,000 patients.

As part of the prestigious public/ private sector partnership project, the new ambulatory care hospitals at Victoria and Stobhill represent a significant investment in National Health Services (NHS) and mark a new era in patient care.

CEM Systems have provided Stobhill and Victoria with an advanced future proof security solution and will continue to support both Glasgow hospitals in their future security needs.

Solution

CEM IP readers

Using CEM EtherProx card readers within the design of the AC2000 system, CEM provided the hospitals with a flexible and versatile IP based security solution.



The EtherProx reader is the industry's smallest Ethernet card reader with LED lights, integrated keypad for added PIN, and an LCD display to show card response messages, for example, 'Access Granted', 'Card Expiring'. The keypad adds PIN security ensuring there are numerous layers of security in order for an individual to enter certain areas of the hospital. This could prove particularly useful for the pharmacy, intensive care and other secure areas of the hospital which require restricted access. The EtherProx reader also features an internal database giving off-line card validation at all times, even when host communications are not available.

A selection of EtherProx readers were also mounted in tamperproof intercom enclosures to add the option of dialogue to specific hospital doors.

Cost savings with Power over Ethernet Plus (PoE+)

Significant cost savings were made throughout the project using the CEM DIU 230 (high power POE+ Door Interface Unit). The key benefit of the DIU 230 is that it eliminates the need for both a mains connection and

a local power supply to the door. As a new building with Ethernet infrastructure, the DIU 230's dedicated security network supplied sufficient power via the same Cat 5e/6 cable to power CEM EtherProx readers and most importantly to reliably power a double magnetic lock at 840mA securing the door. In addition to reducing the cost of electrical infrastructure, the DIU 230 installation is classed as low voltage and can be completed by IT network installers without the expense of an electrician or electrical contractor.

Software applications

Stobhill and Victoria hospitals found many of the AC2000 software modules beneficial including AC2000 VIPPS (ID Badging) which allows security personnel to produce permanent and temporary ID Badges for medical staff, contractors and visitors. With the user friendly AC2000 pass design module, security staff can easily design and print their own access control passes.

Using the AC2000 'Access Levels' application, the AC2000 system offered the hospitals the ability to link card holders to access groups such as day surgery, Accident & Emergency, X-ray etc. This ensures that each individual cardholder has the appropriate level of access to restricted areas.

AC2000 'Broadcast Zones' application also aids the hospitals in their fire evacuation strategy. Broadcast Zones allows emergency evacuation to be staggered in the event of a fire and is also used to open certain doors at specific times of the day for free access.

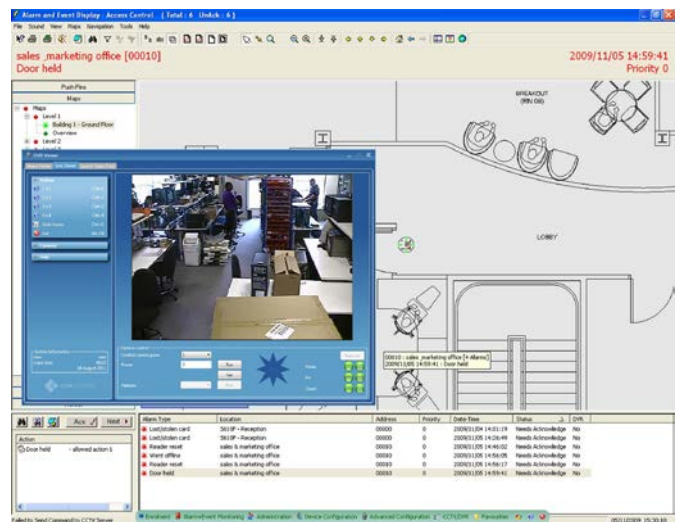
High standard of integrated video

As an integrated security management system, the AC2000 system installed at Stobhill and Victoria was fully integrated with Galaxy Intruder panels and American Dynamics Intellex DVR's.

Both hospitals have one of the UK's largest virtual matrix systems with over 26 Intellex DVR's and over 300 fixed dome and PTZ (Pan, Tilt, Zoom) dome cameras installed. Intellex allows staff to simultaneously record, play back and archive video, text and audio footage - ensuring footage is never lost. Intellex also responds to events with alarm-triggered dome positioning and can be set to record only the events you need by setting triggers for alarms generated electronically. This can help save space on the hard drive.

Integrated Alarm Event Display (AED)

The AC2000 AED application is a powerful interface that shows graphical maps of the hospitals and their associated reader/ camera locations. It is the central graphical user interface that integrates the Intellex cameras and Galaxy Intruder Panels into AC2000.



AC2000 AED responds to all alarm situations in real time, providing a dynamic on-screen interface to reader and camera footage. Via the AED application located in the hospital security room, security personnel can quickly respond to alarm events and view footage as well as remotely control doors in the event of an emergency.

This is highly important to the hospitals as staff need to feel secure when dealing with patients. If a patient becomes abusive or violent and a member of staff feels uncomfortable they can also hit a panic alarm and it will show on the central AED. The security team can then click on the nearest camera in the AED application to view the situation.

Keeping patients and staff secure

Over the coming years, there will be continued investment in Glasgow's hospitals and security will be of extreme importance due to patient safety, criminal threats and increased attacks on staff. CEM Systems have provided Stobhill and Victoria with an advanced future proof security solution and will continue to support both Glasgow hospitals in their future security needs.



“The AC2000 system is ideal for the hospitals, not only due to its versatility but also the savings accrued thanks to the innovative CEM PoE+ Solution. In addition to project savings the DIU 230 also simplified the installation”.

*Martin Bell,
Integrated Solutions
Group Account Manager, ADT Glasgow*

For more information on the products featured here or on any other CEM Systems products please contact us
Call: +44 (0)28 9045 6767
E-mail: cem.info@tycoint.com
or contact your CEM Account Representative

 **CEM SYSTEMS**
From Tyco Security Products
www.cemsys.com

© 2013 Tyco Security Products. All Rights Reserved. CEM/CS/100
The trademarks, logos, and service marks displayed on this document are registered in the United States [or other countries]. Any misuse of the trademarks is strictly prohibited and Tyco will aggressively enforce its intellectual property rights to the fullest extent of the law, including pursuit of criminal prosecution wherever necessary. All trademarks not owned by Tyco are the property of their respective owners, and are used with permission or allowed under applicable laws. Product offerings and specifications are subject to change without notice. Actual products may vary from photos. Not all products include all features. Availability varies by region; contact your sales representative.