



Liverpool John Moores University

Liverpool John Moores University (LJMU) is one of the largest universities in the UK.

A large city-based university dating back to 1823, LJMU has been described as an innovative modern university with a number of outstanding centres of excellence.

CEM's AC2000 access control and security management system provides Liverpool John Moores University with a range of access control features and functionality, and CEM's advanced range of hardware to control access to key doors throughout the university.

CASE SUMMARY

Location:

Liverpool, UK

Systems Installed:

AC2000 access control

AC2000 VIPPS (Visual Imaging and Pass Production System)

AC2000 AED (Alarm Event Display)

Hardware Installed:

100+ S610 card readers

Introduction

LJMU has 24,000 students studying over 200 courses at undergraduate and postgraduate level. With campus sites all over the city, LJMU is best known as one of Merseyside's greatest assets.

Liverpool John Moores University has been using the CEM AC2000 system for over fifteen years. It was first installed in 1995 and has constantly been extended and upgraded to meet the University's growing requirements.

The AC2000 system controls and monitors various buildings so that only those with correct authorization are permitted access to buildings, rooms and other restricted areas across the University's Northern and Southern campuses.

With over 30,000 card holders "the system aids the provision of a safe and secure environment for all staff, students and visitors," said Steve Shackleton, Security Manager, LJMU.

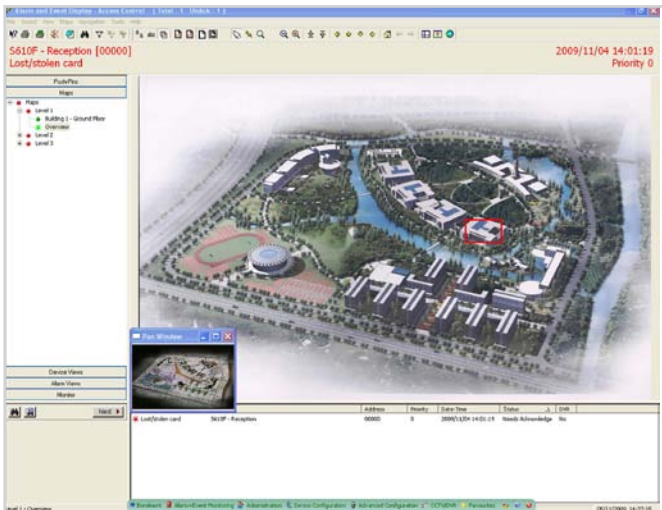
Solution

Using the CEM AC2000 Visual Imaging and Pass Production System (VIPPS), LJMU has access to a full range of video imaging facilities. VIPPS allows the University to capture staff and student images, signatures and details, which are then incorporated onto professionally designed university ID passes.

The VIPPS workstation is fully integrated with the AC2000 system, recording details for staff, students, visitors and contractors that have been issued with a card. System administrators can quickly retrieve staff and student records to assign access levels and time zones, ensuring administrator input is kept to a minimum. The university operates two pass production systems to cater for busy enrolment occasions.



LJMU also use a dedicated AC2000 Alarm Event Display (AED) workstation, which allows the University to view the current status of the entire system. For example, if a reader has been tampered with, AC2000 AED will inform security staff in the form of real time graphical, audio and text-based alarms. This allows instant notification and response to all alarm or system error situations. The AED workstation is located in a purpose built security centre known as "The Lodge", which is staffed 24 hours a day, 365 days a year by the University security force.



In summer 2005 the University invested in a major upgrade of its system. With over 100 CEM S600 readers installed, the University wanted to progressively replace existing Watermark technology within the readers with smart card Mifare technology.

To meet LJMU's requirement, CEM conducted reader firmware/hardware changes uniquely making it possible for S600 readers to recognize both technologies simultaneously. With existing students able to use their old Watermark cards and new enrolments able to use new smart cards, CEM provided LJMU with a cost effective solution to phase out the Watermark technology. The University first opted for CEM's S600 reader due to its intelligent capabilities. In the event that communication is lost, the reader continues to validate ID cards using its internal database.

One card solution

Having embraced the increasing trend towards a smart card system, LJMU adopted a one card identity solution for both access control and university management.

Each student and member of staff is issued with a card containing registration data, course information etc. This card is also useful for administrative services such as library access privileges, cashless vending, photocopying and car parking control, ensuring resources are not wasted. This single card for multiple applications is ideal for LJMU. As a large site requiring a complex solution, the one-card identity offers financial cost savings.

Future security at LJMU

The University is planning to make further use of AED's capabilities by integrating the AC2000 system with fire alarms and CCTV across the campus; the ultimate goal to use AED as the main building alarm management tool. The AC2000 system installed at the University has been continually upgraded throughout the years. As LJMU continues to grow steadily and enrolment figures continue to rise, so will the CEM access control system installed. The system resilience, coupled with its flexibility, offers the University endless expansion and scope.

"The CEM AC2000 system has a proven track record and is continually developed, enabling us to keep up to date with the latest technologies.

CEM are great at adapting the AC2000 system to meet our requirements, offering more than the standard off the shelf package."

*Steve Shackleton
Security Manager, LJMU*

**For more information on the products featured here or on any other
CEM Systems products please contact us
Call: +44 (0)28 9045 6767
E-mail: cem.info@tycoint.com
or contact your CEM Account Representative**



© 2013 Tyco Security Products. All Rights Reserved. CEM/CS/119
The trademarks, logos, and service marks displayed on this document are registered in the United States [or other countries]. Any misuse of the trademarks is strictly prohibited and Tyco will aggressively enforce its intellectual property rights to the fullest extent of the law, including pursuit of criminal prosecution wherever necessary. All trademarks not owned by Tyco are the property of their respective owners, and are used with permission or allowed under applicable laws. Product offerings and specifications are subject to change without notice. Actual products may vary from photos. Not all products include all features. Availability varies by region; contact your sales representative.