



## Dubai International Airport, Concourse 3, Terminal 3

The aviation industry renowned AC2000 access control and security management system, designed specifically to meet the unique demands of airports, provides the new Terminal 3, Concourse 3 of Dubai International Airport with the highest level of reliable security.

Installed by CEM Approved Reseller, Tyco Fire & Security LLC, AC2000 provides a fully integrated, powerful platform for video, access and fire management.

### CASE SUMMARY

---

**Location:**

Dubai, UAE

**Systems Installed:**

AC2000 access control and security management system

Boarding and Deplaning Route Management (BDRM) solution

CEM BACnet Interface

AC2000 Failover

Integration with third party video, fire and lift control systems

## Introduction

Concourse 3, Terminal 3 was part of a multibillion dollar program to upgrade and extend Dubai International Airport, making it one of the world's largest airports by 2025. Dedicated for use by Emirates Airline, Terminal 3 increased Dubai International's total capacity by 43 million passengers per year to 60 million when it opened along with an associated airside facility known as Concourse B in 2008. The Terminal 3 complex also includes Concourse A, a purpose-built facility for A380, which opened in January 2013 increasing the airport's capacity to 75 million passengers per annum.

## Solution

The powerful CEM AC2000 system has a proven record as one of the most reliable and resilient security solutions available. It not only provides Dubai International Airport with advanced access control but also system failover. AC2000 Failover provides the ability to create and maintain a copy of the main AC2000 server. In the event that the main server fails, the AC2000 Failover server will immediately take over until such times as the main server is restored.

Responsive to the needs of the project, CEM also provides an innovative Boarding and Deplaning Route Management (BDRM) solution to aid the flow of arriving and departing passengers and support the extensive use of double boarding bridges for the A380.

### **Integration**

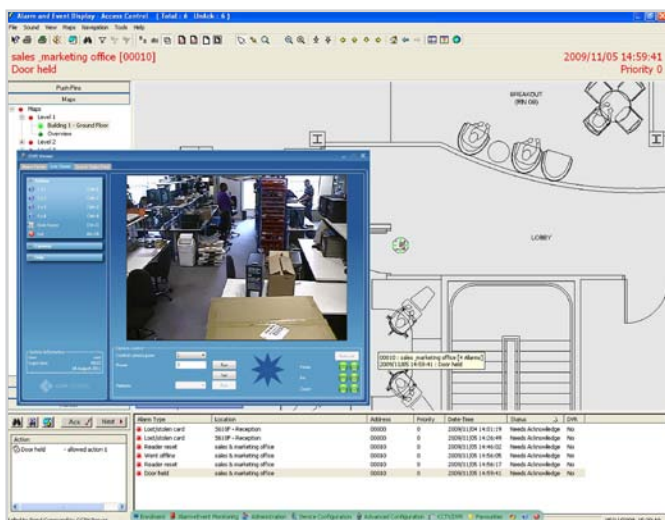
The AC2000 solution installed at Dubai International Airport was also integrated with lift controllers at Concourse 3 to allow seamless control and monitoring of access to 11 floors within Concourse 3, Terminal 3.

A high-level AC2000 video interface for Dubai International Airport's preferred video product was also provided. The AC2000 video interface provides the ability to associate access control alarms with real-time or pre-recorded digital video clips. This enables AC2000 to act as the central command and control for alarm management.

CEM also developed a two-way BACnet interface to enable fire alarms to be managed on the main AC2000 alarm handling graphical user interface (GUI). The CEM BACnet interface enables AC2000 to integrate into systems such as building management systems utilising BACnet/IP protocol functionality. The interface allows the alarms to be sent to the Building Management System (BMS), Heating, Ventilation, and Air Conditioning (HVAC), Fire and other external systems that support BACnet communication. This bi-directional interface also allows AC2000 to receive notifications with the ability to display and monitor the events on AED.

*“We have worked closely with CEM and Dubai International Airport on providing a highly secure and fully integrated solution for the Concourse 3 Terminal. Over 1200 smart card readers were installed to secure airside and landside doors within the airport, with a high-level AC2000 video interface for Dubai International Airport’s preferred video product.”*

Craig Menzies  
 Security Division Manager  
 Tyco Fire & Security UAE LLC



With one fully integrated, powerful platform for video, access and fire alarm management, Dubai International Airport has a central view of all alarms throughout Terminal 3, Concourse 3.

**For more information on the products featured here or on any other  
CEM Systems products please contact us  
Call: +44 (0)28 9045 6767  
E-mail: [cem.info@tycoint.com](mailto:cem.info@tycoint.com)  
or contact your CEM Account Representative**



© 2013 Tyco Security Products. All Rights Reserved. CEM/CS/104  
The trademarks, logos, and service marks displayed on this document are registered in the United States [or other countries]. Any misuse of the trademarks is strictly prohibited and Tyco will aggressively enforce its intellectual property rights to the fullest extent of the law, including pursuit of criminal prosecution wherever necessary. All trademarks not owned by Tyco are the property of their respective owners, and are used with permission or allowed under applicable laws. Product offerings and specifications are subject to change without notice. Actual products may vary from photos. Not all products include all features. Availability varies by region; contact your sales representative.