



Baylor Medical Center at Uptown

Baylor Medical Center at Uptown is a state-of-the-art surgical hospital in the Dallas Uptown area which opened in 2011. Specialties and services include Orthopaedic, Spine, Pain Management and Plastic surgery.

Putting safety and the care of their patients at the forefront, Baylor Medical Center at Uptown required a proven access control system which offers integrated biometric security as well as the ability to work with third party systems.

CEM Approved Reseller Access Technology Systems selected the CEM AC2000 Lite access control and security management system to meet these requirements.

CASE SUMMARY

Location:

Dallas, Texas

Systems Installed:

AC2000 Lite access control system
AC2000 AED (Alarm Event Display)

Hardware Installed:

S610f fingerprint card reader

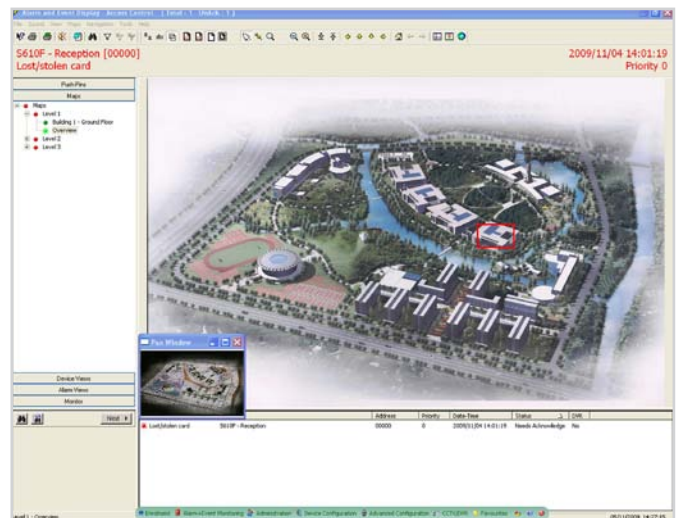
Introduction

The 63,000 square foot facility at Baylor Medical Center at Uptown, is a joint venture between Baylor Health Care System (BHCS), United Surgical Partners International, and local physicians.

The AC2000 Lite system offers Baylor Medical Center at Uptown a feature rich, yet affordable access control system that meets their complete security needs. AC2000 Lite is an integrated access control, alarm processing and photo badging security management system.

Solution

AC2000 Lite software incorporates a comprehensive suite of applications including AC2000 AED (Alarm Event Display), an integrated alarm processing application which provides a dynamic graphical representation of all system events. In addition, CEM's AC2000 External Systems application means that the hospital can interface the AC2000 Lite system to their existing video management system without the need for costly development work.



The CEM S610f fingerprint reader was central to the system design at the Baylor Medical Center at Uptown. In addition to fingerprint security, the S610f reader features an internal database for offline card validation, a keypad for PIN verification and an LCD for displaying meaningful messages such as 'Card Expiring' and 'Access Granted'.

The integrated biometric system means that staff at the hospital can administrate cardholders via one user-friendly interface, without needing a separate biometric network. Biometric templates are then encrypted and fully distributed from the server to the S610f reader internal database.

“The primary reason for choosing CEM was based on the strength of the CEM S610f fingerprint readers and their ability to provide integrated template management”.

Jamie Finegan

*Vice President of Business Development
Access Technology Systems Inc.*



**For more information on the products featured here or on any other
CEM Systems products please contact us
Call: +44 (0)28 9045 6767
E-mail: cem.info@tycoint.com
or contact your CEM Account Representative**



© 2013 Tyco Security Products. All Rights Reserved. CEM/CS/115
The trademarks, logos, and service marks displayed on this document are registered in the United States [or other countries]. Any misuse of the trademarks is strictly prohibited and Tyco will aggressively enforce its intellectual property rights to the fullest extent of the law, including pursuit of criminal prosecution wherever necessary. All trademarks not owned by Tyco are the property of their respective owners, and are used with permission or allowed under applicable laws. Product offerings and specifications are subject to change without notice. Actual products may vary from photos. Not all products include all features. Availability varies by region; contact your sales representative.