



AC2000 Security Hub

New Product Announcement

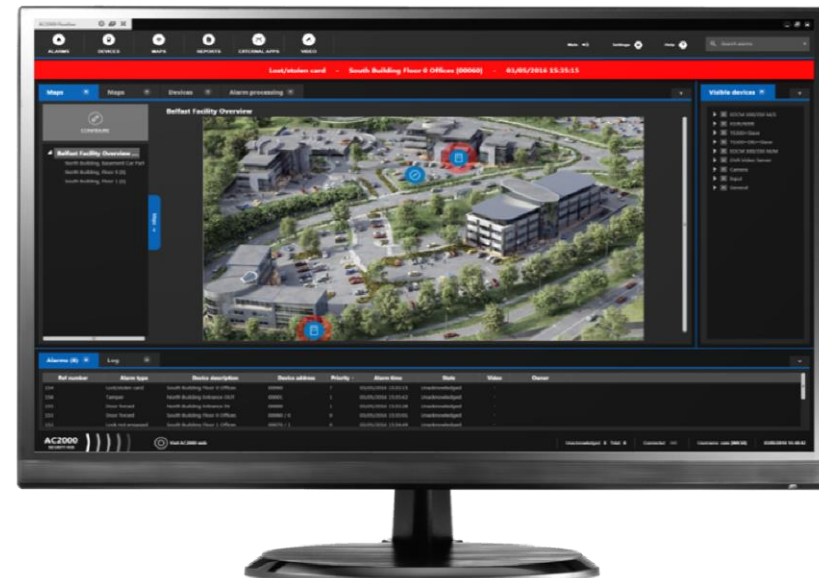
Release Date: July 2016

tyco
Security Products

// Introducing: AC2000 Security Hub

CEM introduces new Security Management client for AC2000 access control system featuring:

- // Modern and user friendly Security Management Environment with multi-screen support
- // Advanced Alarm View & Alarm Processing Workflows
- // Advanced Graphical Alarm Management
- // Comprehensive Security Reports
- // Integrated Scalable video Viewer
- // Guard Tour and Trace Events
- // Flexible User Restriction Control



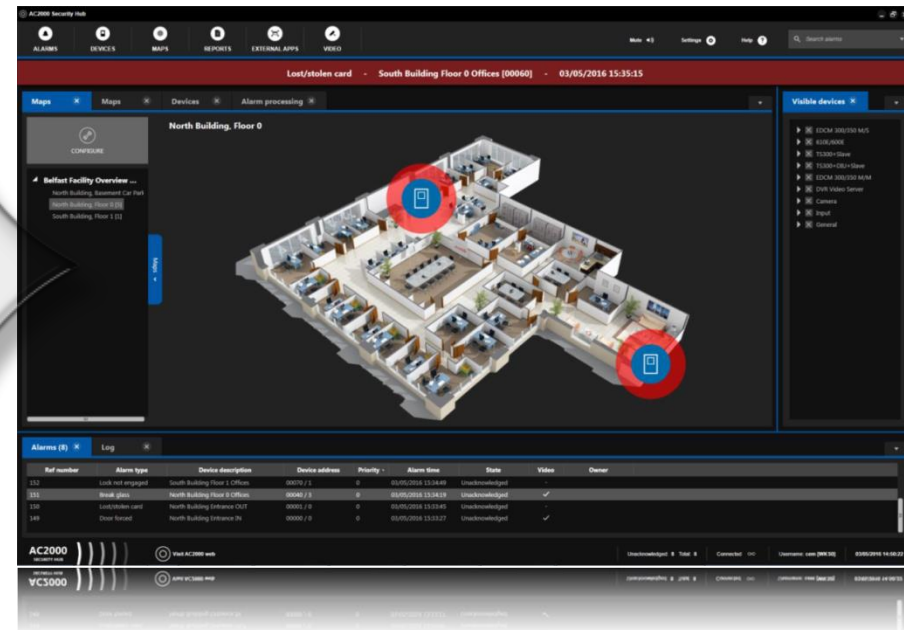
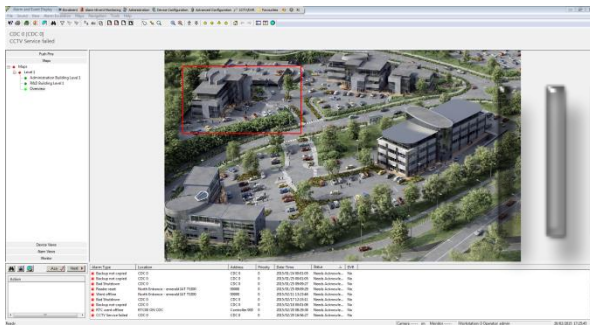
Introducing: AC2000 Security Hub

As a follow-on from the Alarm & Event Display (AED), **AC2000 Security Hub** increases site security awareness and improves event visualisation and response.

Scalable

Reliable

Modern



// AC2000 Security Hub: Modern Interface

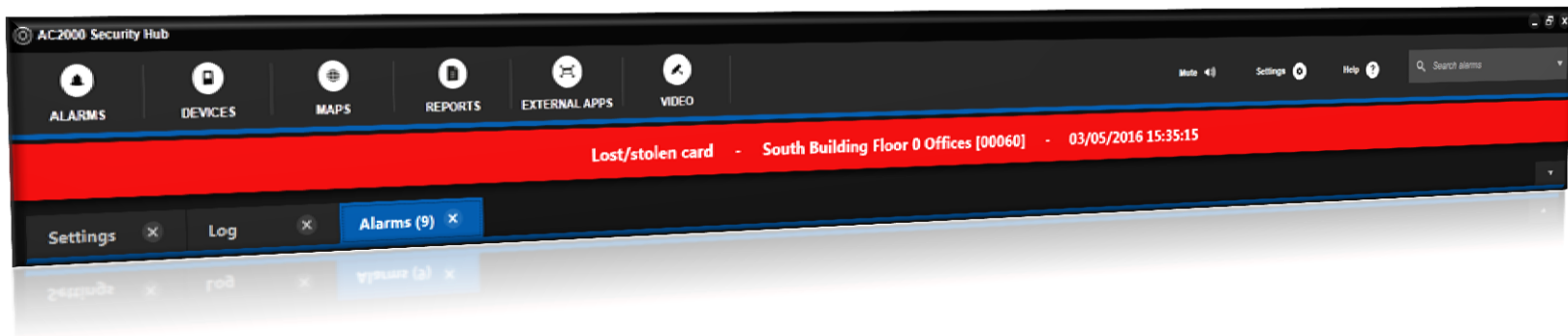
AC2000 Security Hub is a real-time alarm & event processing platform and integrated, state-of-the-art component of the AC2000 access control and security management software.



- // powerful and intuitive user interface
- // graphical workflow tools
- // better site security awareness
- // improved alarm handling
- // increased operator efficiency

// AC2000 Security Hub: Modern Interface

AC2000 Security Hub features clear and easy-to-use overview screen, with all application groups lined up in the top menu bar for easy access and intuitive icons that guide the operator in accessing different modules.



// Benefits:

- Easy navigation through drop-down menus
- Intuitive design with tab-based modular workspaces
- Optimised multi-workspace operation

// AC2000 Security Hub: Multi-monitor Support

AC2000 Security Hub focuses on presenting the operator with clear and concise audio-visual security event notifications to ensure that they are identified and responded to in a timely fashion and according to priority.



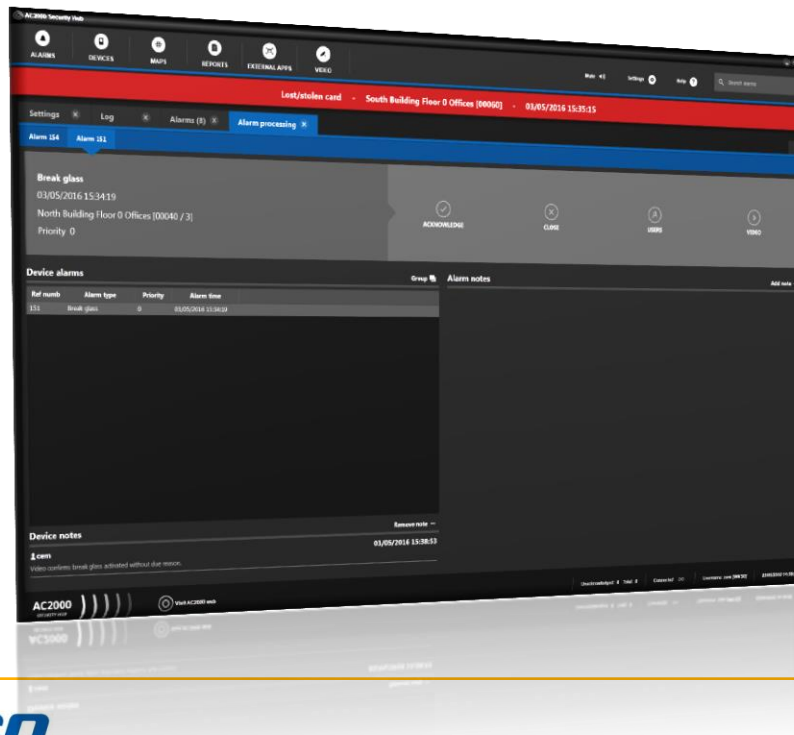
// Benefits:

- Ability to re-order or undock and reposition application tabs ensures productive multi-monitor security management environment
- New interface simplifies daily security operations and reduces the risk of missed events



// AC2000 Security Hub: Alarm Processing

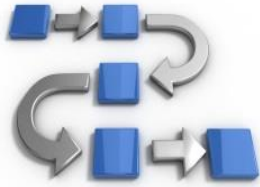
When accessing the Alarm view, the operator is presented with a brief summary list of all active alarms. The Alarm Processing module will appear by selecting and double-clicking on alarm.



// Benefits:

- Security personnel can track security events and follow specific workflow steps in order to respond to potential threats in a timely fashion.

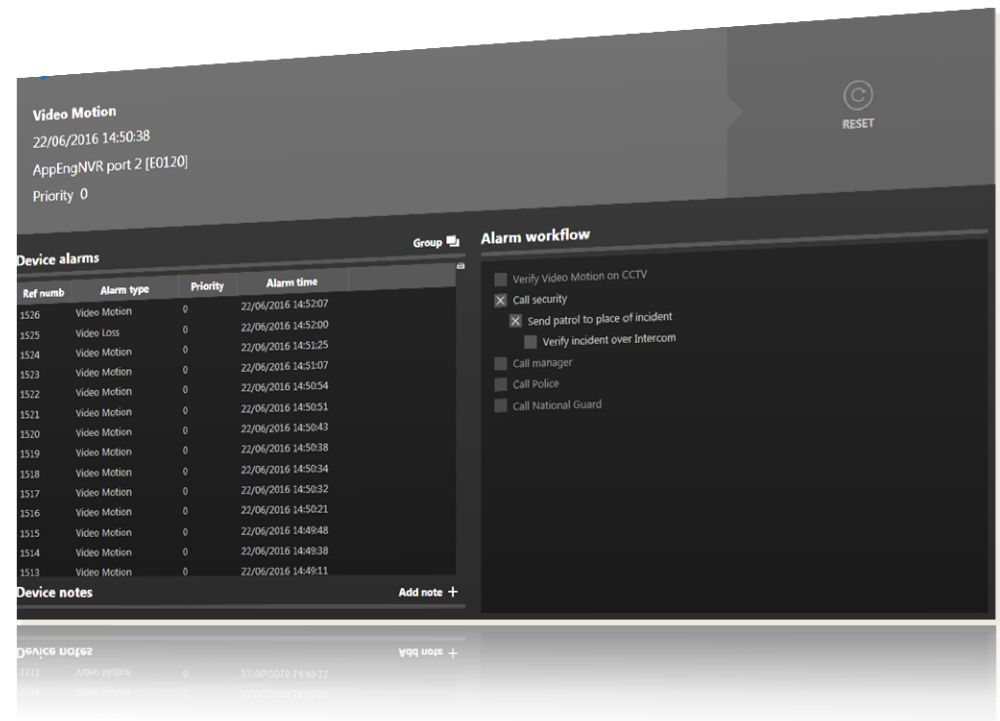
AC2000 Security Hub: Workflows



A set of sequential actions can be configured for different alarm types and will include a process tree which must be completed in predefined steps, before the alarm can be reset.

// Benefits:

- Ensure the correct course of action is undertaken by a security operator, when responding to a security event



// AC2000 Security Hub: Integrated Video Interface*



AC2000 Security Hub incorporates a seamless video integration interface which enables live and recorded video footage for specific configured alarms to be displayed



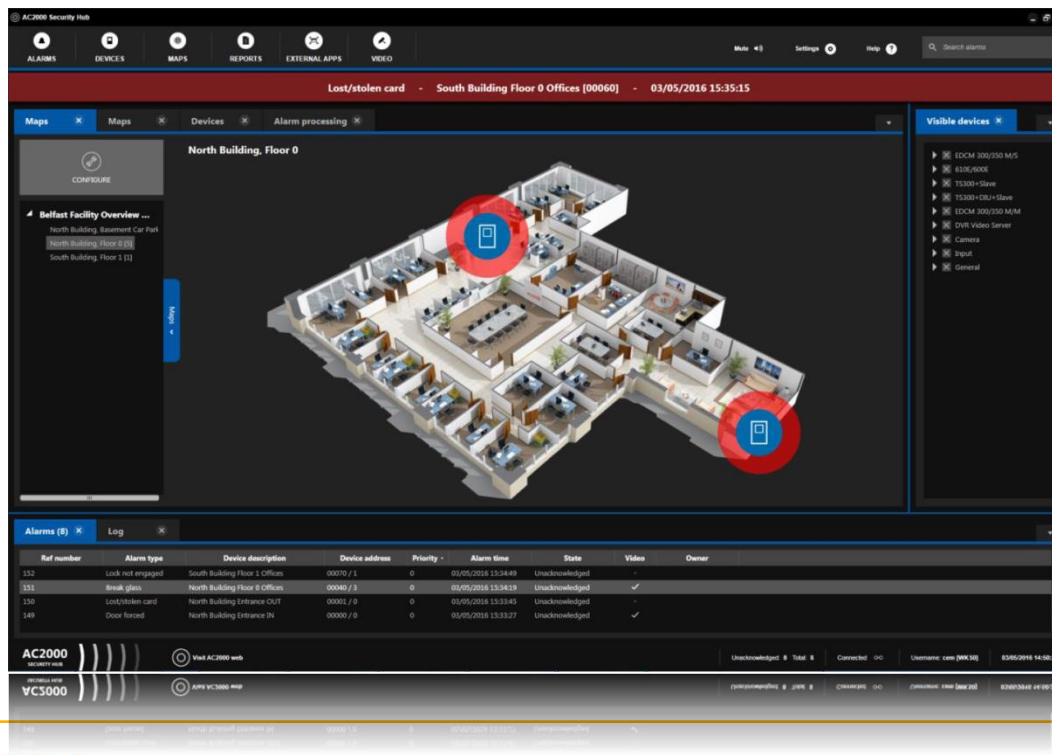
// Benefits:

- Operator can easily access the alarm video footage directly within the AC2000 Security Hub
- When the user selects a camera from the list, the video 'micro-viewers' will instantly update
- camera control facility is available in Live Video 'micro-viewer' for PTZ cameras such as dome-based devices

AC2000 Security Hub: Graphical Maps*



AC2000 Security Hub integrates with many 3rd party systems and devices, acting as a Security Management System.



// Benefits:

- Operator can quickly identify alarm events and location, then respond using the intuitive user interface.
- Customisable icons, sounds, alarm control, isolation, and reporting placed on maps.
- Run third party applications from the map environment.

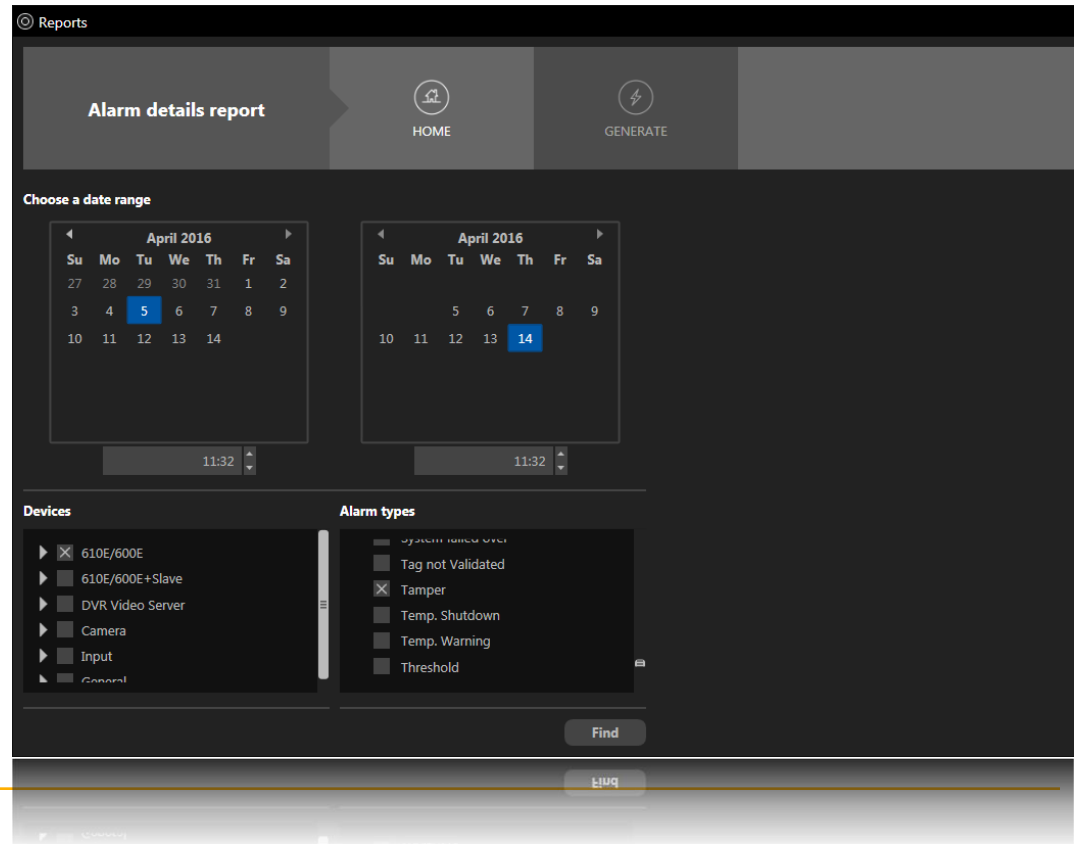
// AC2000 Security Hub: Reporting Tools



AC2000 Security Hub now includes a fully integrated and easily accessible reporting tool.

// Benefits:

- Operator can report on Alarms, Alarm priorities, Escalation or Users.
- Reports are easy to configure and can be printed or saved.



Reports

Alarm details report HOME GENERATE

Choose a date range

April 2016

Su	Mo	Tu	We	Th	Fr	Sa
27	28	29	30	31	1	2
3	4	5	6	7	8	9
10	11	12	13	14		

11:32

April 2016

Su	Mo	Tu	We	Th	Fr	Sa
			5	6	7	8
10	11	12	13	14		

11:32

Devices

- ☒ 610E/600E
- ☐ 610E/600E+Slave
- ☐ DVR Video Server
- ☐ Camera
- ☐ Input
- ☐ General

Alarm types

- ☐ System armed over
- ☐ Tag not Validated
- ☒ Tamper
- ☐ Temp. Shutdown
- ☐ Temp. Warning
- ☐ Threshold

Find

AC2000 Security Hub: Other Features

AC2000 Security Hub offers a range of additional functionality including:



Guard Tours

Alarm Actions



User Restrictions



Command Buttons



Thank you!

tyco
Security Products