

AC2000 Video Interface

Synectics

FEATURES

OVERVIEW

The AC2000 video interface for Synectics provides the ability to associate access control alarms with Synectics digital video footage. This enables AC2000 to act as the central Security Management System (SMS) and provides a fully integrated bi-directional interface.

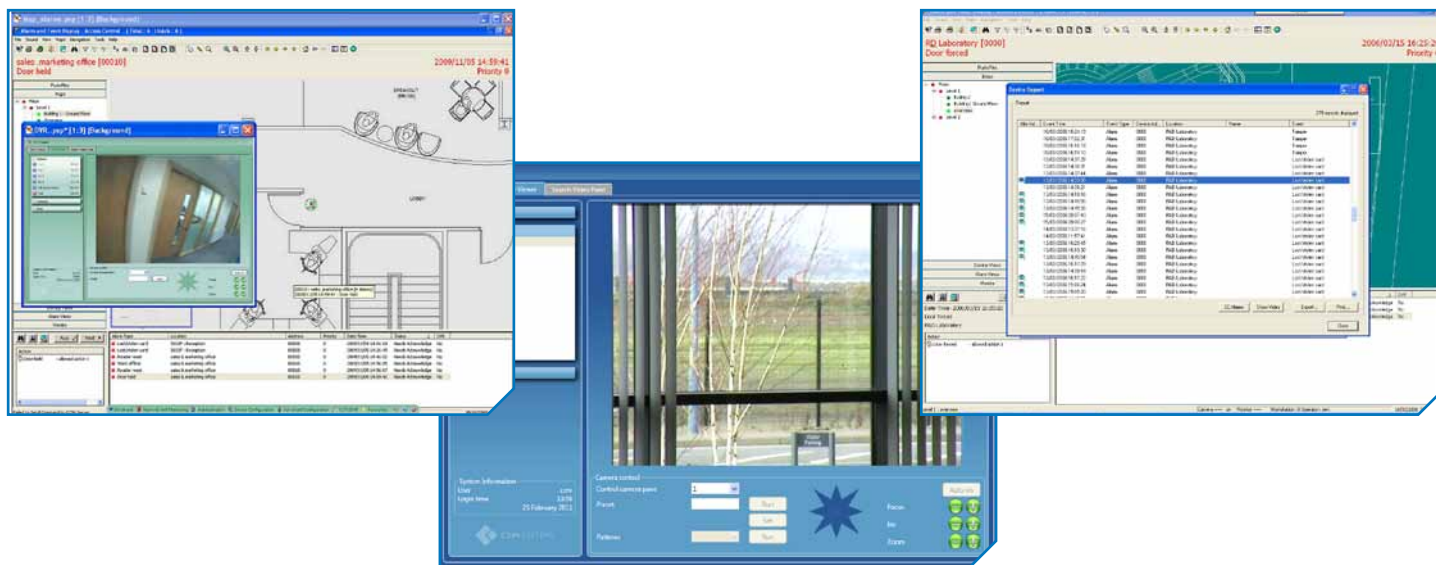
The AC2000 'Video Configuration' module seamlessly integrates AC2000 with Synectics, giving the operator a range of video imaging facilities to generate alarm reports with recorded video playback. The interface also allows system operators to view live video feed, along with live video pop-up and camera control. This provides a fully integrated pan and zoom functionality, all within the central AC2000 security system.

The system allows a user to fully integrate the power of a Synectics video system into the central AC2000 Alarm and Event Display (AED) application. AED enables all alarms, events and associated camera footage to be displayed centrally on the AC2000 system.

AC2000 Synectics Video Interface has been designed to integrate easily with the full range of Synectics CCTV and video devices.

- Seamless integration with Synectics video products
- Associate access control alarms with digital video footage
- Live video feed activated directly from AC2000 AED (Alarm and Event Display) application
- Live video pop-up based on priority or time
- Display up to nine individual camera feeds simultaneously in a single screen virtual matrix
- Adjust camera pan, tilt and zoom via integral software control
- Available for use in AC2000 SE (Standard Edition) system

PRODUCT HIGHLIGHTS



Alarms with associated video

If an alarm event contains associated video footage, the operator can access the footage within the AC2000 Alarm Event Display (AED) application which will activate a 'Video Recorder Viewer'.

Once the video recorder viewer has launched, the actual video footage is then uploaded from the Synectics system. The viewer window will automatically display the video playback from the start of the footage. Standard video controls are available on the Video Viewer to Play, Pause, Fast Forward/Rewind.

Additionally system operators can view archived video footage by running alarms reports in the AC2000 'Extended Reports' application.

Recorded Video Search and Retrieve

The video viewer also allows the user to search for alarms with video footage using various criteria which can then be replayed by clicking on the requested alarm detail.

Camera control

A camera control facility is available for moveable cameras such as dome-based devices. The following controls are available:

- Iris, Zoom and Focus Controls
- Camera Preset Selection
- Pan + Tilt Control

Live video feed

The operator can split the video screen into 1x1, 2x2 (4) or 3x3 (9) options allowing the operator to view live footage simultaneously, each in its separate pane.

Each pane can be simply configured using a drag and drop facility to place the appropriate camera into the required pane.

Live video pop-up

The Synectics interface also has the capability for live video pop-up appearing on screen based on alarm priority or time. This allows instant access to live video for certain alarms and is used with a queuing system. This allows the operator to easily view live feeds when multiple alarms are received.

Minimum Requirements

- AC2000 SE v6.1 software
- Synectics Synergy pro GUI from V1.19.04
- Synectics Synergy CEM Integration Package (Supplied by Synectics)

Synectics Supported Products

- Synectics Synergy pro GUI from V1.19.04
- E100 + E800 Encoders
- IP Camera's

Product Code

SWNVR-SY Synectics Interface

For other Synectics products please contact CEM Systems to confirm compatibility.

Product specifications and availability is subject to change without notice. Certain product names mentioned herein may be trade names and/or registered trademarks of their companies.