

AC2000 Occupancy Zones

FEATURES

OVERVIEW

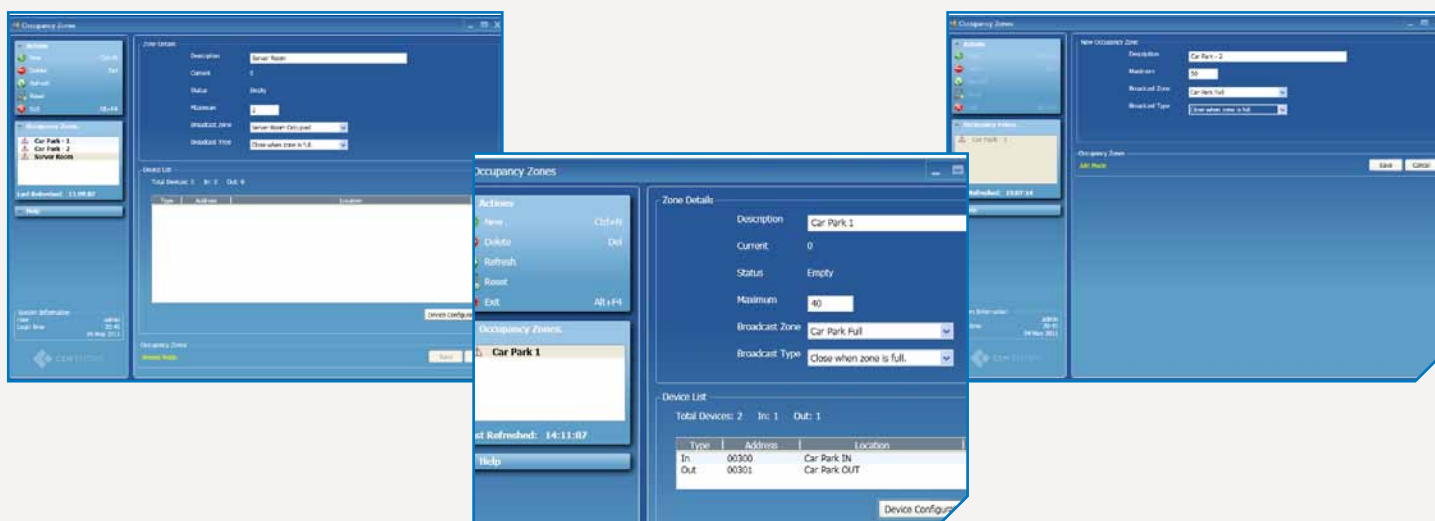
AC2000 Occupancy Zones is designed to count and limit access to pre-defined zones within a building/site. Access control operations occasionally demand limited access to selected areas or zones. Using the AC2000 Occupancy Zones application, system administrators can set a maximum number of current card transactions for each zone. One or more IN and OUT card readers are used to count the number of current transactions. Outputs can then be triggered when totals reach zero or the maximum set number is reached.

AC2000 Occupancy Zones automatically prevents people from entering a zone once the maximum occupancy level has been reached. This can be used for operational purposes or to assist with health & safety procedures.

AC2000 Occupancy Zones is ideal for car park applications. When a maximum number of cars is reached in the car park, AC2000 can trigger a car park barrier (Broadcast Zone) to close when the car park becomes full. The application can also control the lighting in a zone by automatically turning the lights on when the zone is occupied and turning them off when the zone is unoccupied. (e.g. 'Open when zone is occupied' will Open the broadcast zone when the occupancy count goes from 0 to 1 and this can be used to turn on the lights when the first person enters a zone).

- Limit access to a pre-defined zone or multiple zones
- CEM Ethernet & Biometric readers supported
- Outputs activated e.g. Car park Full indicator
- Outputs activated when Zone Empty or Zone Full
- Allow users to define occupancy zones and set a maximum occupancy level for operational purposes
- Intuitive setup and configuration tool
- Available as standard on CEM AC2000 SE & AC2000 Lite security management system

SOFTWARE HIGHLIGHTS



Ease of Configuration

The Occupancy Zones application displays a list of the currently configured zones. For a selected zone the following information will be displayed on screen:

- Zone name
- Maximum occupancy level
- Current occupancy level
- Broadcast type
- Broadcast zone
- IN/OUT device list

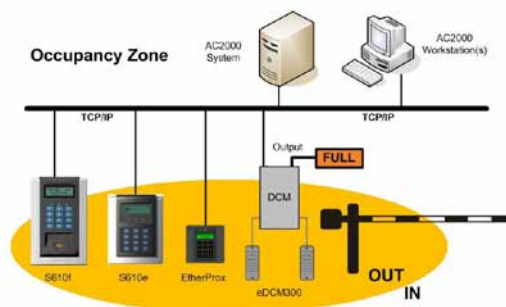
Using the easy to use Occupancy Zones application, system administrators can add, edit and delete an occupancy zone, as well as set the occupancy count for a selected zone. The user can also manually reset a zone and/or change the occupancy count if required.

Device Configuration

The device list will contain the details of all of the readers which allow access IN or OUT of the occupancy zone and indicate which devices are IN readers and which devices are OUT readers. Selecting which Outputs are activated is carried out using the AC2000 Broadcast application.

Automatically limit access to zones

AC2000 Occupancy Zones provides customers with an automatic method of counting and limiting access to certain zones, without having to employ a full time attendant for monitoring. For this reason the module is ideal for car park applications as it restricts further vehicles from entering after the maximum occupancy has been reached.



Minimum system requirements

AC2000 SE v6.3 & AC2000 Lite v6.4 and upwards
AC2000 Occupancy Zones is available as standard in AC2000 SE software license

AC2000 RTC (Real Time Controller) software license – when using CEM Ethernet readers

ECM (Ethernet Communication Module) – when using CEM Serial readers

*CEM S9064/S9032 serial controllers are not compatible with this module

Product specifications and availability is subject to change without notice. Certain product names mentioned herein may be trade names and/or registered trademarks of their companies.