

AC2000 Lockdown Application

FEATURES

OVERVIEW

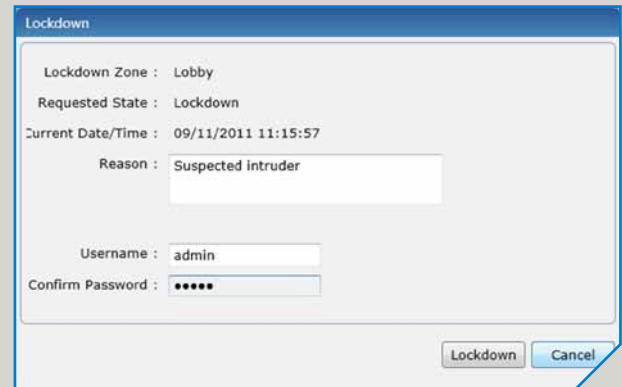
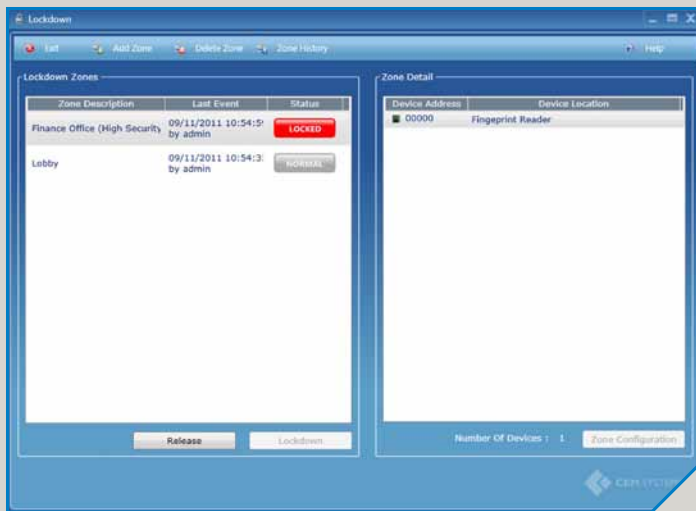
The AC2000 Lockdown Application allows system operators to temporarily block access to a CEM Access Control Reader or a group of Readers within specified area in case of a major event.

The functionality of the Lockdown application is based on Lockdown Zones and when activated it will deny access to any CEM Reader (including REX button) that is configured within the Lockdown Zone, consequently sealing off the area on a site to prevent movement of personnel between locked and other areas.

Any number of readers can be assigned to a specific Lockdown Zone to represent a particular area in a building, for example a warehouse. A zone can also be created to represent a security level, for example a maximum security area which can be instantly locked out of access independently from other areas.

The user friendly interface allows easy configuration of Lockdown Zones with a CEM Reader or group of readers. The Lockdown application can then be activated by simple point-and-click action. The Lockdown Application is a perfect solution where prevention of access to a specific area is required at the click of a button.

- Block access to specified areas at the click of a button
- Intuitive user-friendly interface
- Configurable zones including single CEM Reader or a group of readers
- Printable Zone History showing all past events on the readers assigned to the Zone with the ability to save as report
- Any number of CEM Readers from AC2000 System can be assigned to each Lockdown Zone
- Lockdown seals off only concerned area instead of entire site
- Username and password can be configured as a requirement to be able to lockdown a zone



How does the Lockdown Application work?

The Lockdown configuration is based on the global Timezone parameter to activate and de-activate the Lockdown Zones. This Timezone parameter will override any Timezone configured for concerned device, therefore the device's Timezone will have to be re-configured back manually. To engage Lockdown mode a requirement to enter username and password can be configured as an additional security measure.

When the Lockdown mode is engaged the CEM readers will then display the "No Access" message on the LCD and the red LED will light up.

When the reader within specified zone is in Lockdown mode the user can still execute Oneshot command on that reader, which will effectively allow the door to be open, however the reader will return to Lockdown mode after the Oneshot process ends. Also Lockdown mode will be overridden by a Broadcast message sent to the readers which are within the Broadcast and Lockdown Zone at the same time.

Prerequisites

In order to use the Lockdown feature the following is required:

- application permission to launch the Lockdown application and to access Devices configuration
- relevant devices must be pre-configured in Devices application
- Lockdown Zones must be configured in Lockdown application
- all devices within the Lockdown Zone must be on-line (please note that the Lockdown application does not display the connection status of the readers)

The Lockdown application uses parameters already available in the CEM S610 and xProx reader ranges. These parameters are not implemented in the CEM Door Controller Module (DCM) therefore the Lockdown feature is not available with these devices.

Please note that the Lockdown feature only integrates with CEM Access Control System Readers and is not applicable to any 3rd party systems like Fire or Intruder Detection systems.

System Requirements:

- AC2000 Lite v6.4
- AC2000 SE v6.4

Product specifications and availability is subject to change without notice. Certain product names mentioned herein may be trade names and/or registered trademarks of their companies.