

AC2000 Video Interface

IndigoVision NVR

OVERVIEW

The AC2000 IndigoVision Interface provides the ability to associate access control alarms with digital video. The IndigoVision interface seamlessly integrates to live and recorded video footage on the IndigoVision Control Centre.

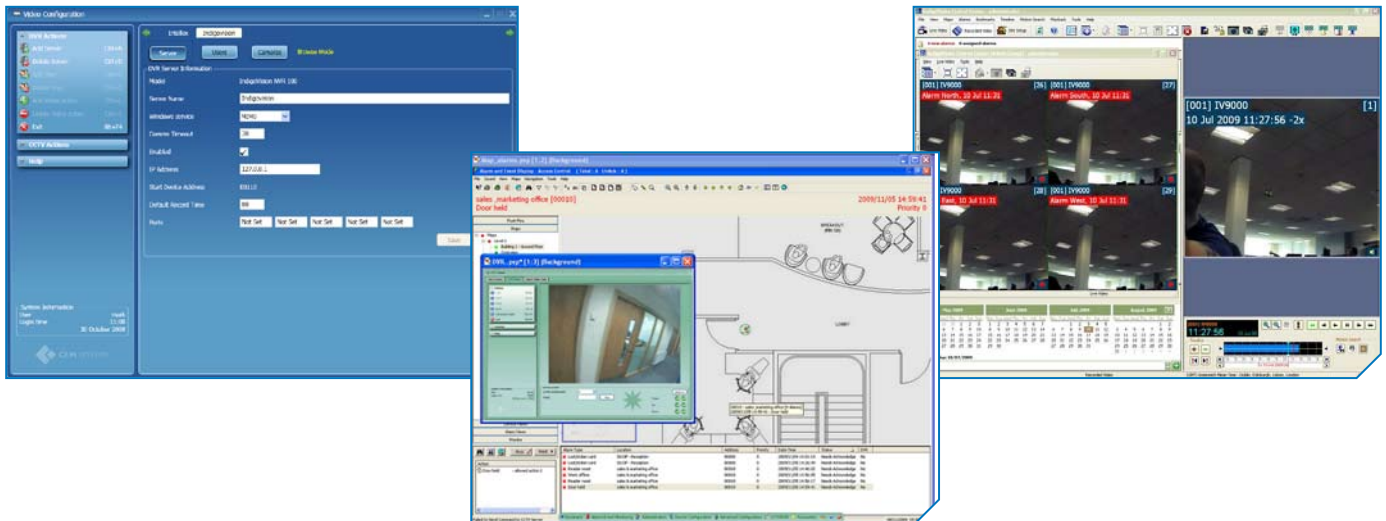
The operator is provided with a range of video imaging facilities to generate alarm reports with associated video, as well as simultaneously view live video feed.

Utilising two way communications, AC2000 can send and receive both access control and video alarms, allowing for a complete security and video management system.

The system allows a user to fully integrate the power of a CCTV/NVR (Network Video Recorder) into the CEM AC2000 AED (Alarm and Event Display) system.

FEATURES

- Seamless integration with IndigoVision NVR (Network Video Recorder) System
- Associate access control alarms with digital video footage
- Live video feed activated directly from CEM AC2000 AED (Alarm and Event Display) module
- Real time visual tracking and recording during alarm conditions
- Receive and transmit alarm signals to and from IndigoVision System.
- Automatically select camera(s) upon any alarm condition
- Works in conjunction with the IndigoVision Control Centre

SOFTWARE HIGHLIGHTS


Alarms with Associated Video

If an alarm event contains associated video footage, the operator can access the footage either within the 'Device Report' screen or within the 'Alarm Event Display' (AED) which will activate the IndigoVision Control Centre. This will display and playback the alarm footage.

Standard video controls are available to Play, Pause, Fast Forward/Rewind, Full Screen e.t.c. Footage details are also displayed in the accompanying window and the user has an option to export the video to file.

Two Way Communications

AC2000 can send access control alarms to the IndigoVision system and it can also receive alarms from the IndigoVision system, covering Video Loss, Video Gain, Network Loss, Network Gain, Video Analytics (e.g. motion detection).

Operation

The interface uses a dedicated Alarm Server which sends and receives both AC2000 & IndigoVision alarms. An AC2000 Workstation will have a monitor for the AED (Alarm Event Display) and another monitor or video wall connection for the IndigoVision Control Centre.

Live Video Feed

The operator can split the video screen into 1x1, 2x2 (4), 3x3 (9) or 4x4 (16) options, allowing the operator to view live footage from up to sixteen cameras simultaneously, each in its separate window pane.

The IndigoVision servers and cameras can be defined on the AC2000 system with icons representing each camera. Servers and cameras can also be visually placed on the AED maps. When an IndigoVision camera alarm occurs, it will be displayed on the AED on the appropriate camera icon.

Upon a given alarm the system can be configured to automatically display the camera footage in one of the window display panes.

Requirements

AC2000 SE v6.1 software & upwards
 AC2000 IndigoVision Interface Alarm Server
 IndigoVision Alarm Server

(Contact CEM for further details)