

AC2000 External Systems Interface

FEATURES

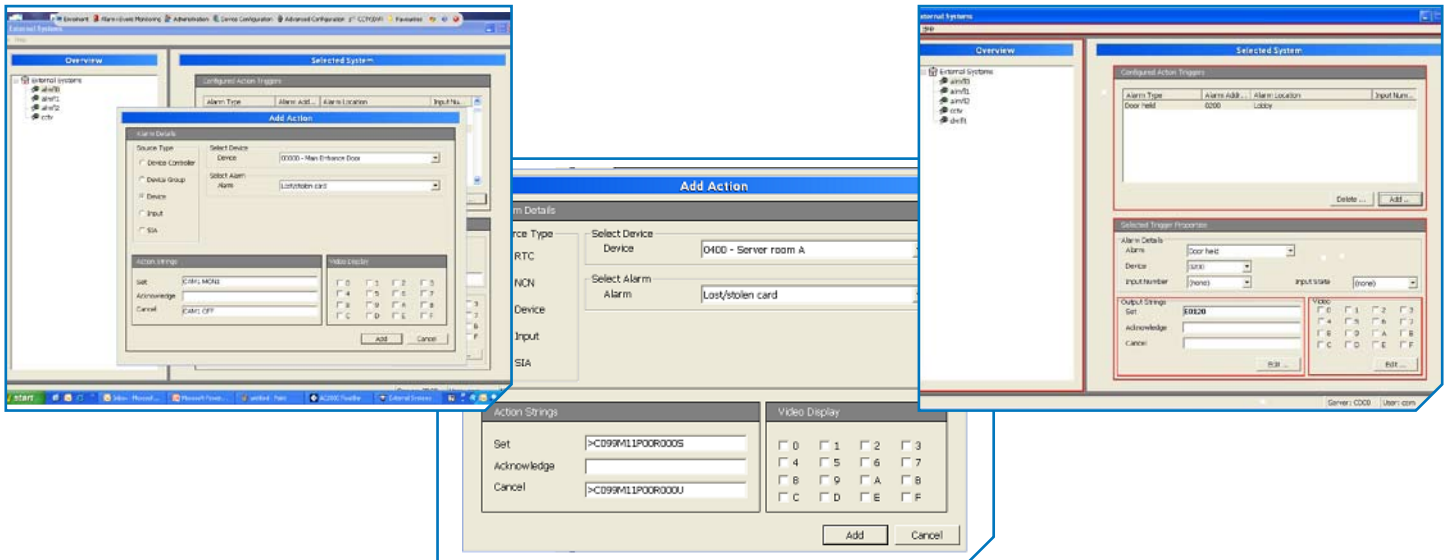
OVERVIEW

The AC2000 External Systems Interface removes the need for custom software development when an interface to a third party system is required. It provides the user with a quick and easy way of configuring their own interface.

The AC2000 External Systems Interface works by sending user defined messages when alarms are triggered, acknowledged or cancelled on the AC2000 access control system. This provides a generic one way interface to any third party system that can accept ASCII strings and has a remote command interface. The messages can be sent via a serial cable (RS232) or via Ethernet (TCP/IP).

Interfaces are configured using the intuitive AC2000 user interface and will operate in real time, giving a seamless solution to many third party interfacing requirements.

- Generic third party systems interface tool
- Operates over serial RS232 or Ethernet TCP/IP
- Supports ASCII characters
- AC2000 Graphical User Interface for easy configuration
- Real time operation
- Removes the need for any customised software development when interfacing third party systems
- Interfacing is quick, easy and configurable by the operator

PRODUCT HIGHLIGHTS


Simple to Configure

AC2000 External Systems interface is simple to configure. The user simply sets out whether the ASCII strings will be sent over Ethernet TCP/IP or Serial RS232. They then simply select the alarm source within AC2000 and input the message(s) to be sent, either when the alarm is 'Set', 'Acknowledged' or 'Cancelled'.

External Systems Examples

The AC2000 External Systems Interface can be used in many scenarios, such as interfacing to CCTV, DVR (Digital Video Recorders), NVR (Network Video Recorders) and Building Management Systems (BMS). Examples of which include, switching a camera to a preset or instructing a DVR to begin recording upon an AC2000 access control alarm. Also, sending alarm information to a BMS or third party command and control system, in real time. AC2000 External Systems interface is suitable for any system that can accept text based ASCII strings.

Usage

The primary benefit of the AC2000 External Systems interface is that no interface software development is required. Administrators simply configure the interface using the AC2000 software. This offers customers the flexibility to seamlessly integrate the AC2000 access control system with third party systems of their choice.

The Set, Acknowledge and Cancel messages entered by the system administrator are ASCII text strings. It is not necessary to configure all three messages for each alarm. The administrator can specify with ASCII characters whatever commands the external system requires i.e. AC2000 SE can use the third party system's commands/protocol.

System Requirements

AC2000 Lite v5.7 software & upwards
 AC2000 SE (Standard Edition) v5 software & upwards
 AC2000 AE (Airport Edition) v5 software & upwards

Product specifications and availability is subject to change without notice. Certain product names mentioned herein may be trade names and/or registered trademarks of their companies.