

# AC2000 Database Partitioning

## FEATURES

### OVERVIEW

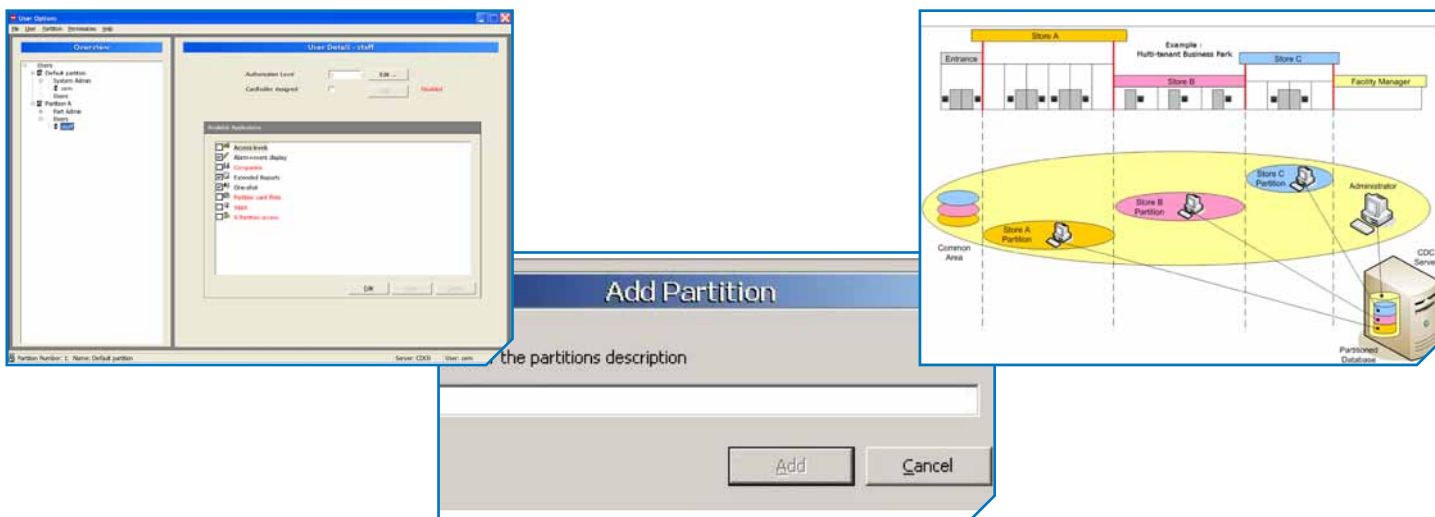
AC2000 database partitioning enables the AC2000 SE (Standard Edition) server to be divided into multiple partitions. Partitioned system administrators have the ability to fully add personnel card holders and produce ID badges on their own site, but are prevented from seeing the data of other partitioned databases that reside on the same AC2000 CDC server. \*Note: Visitor & Vehicle card holders cannot be partitioned.

Database partitioning is primarily designed to operate in situations where an AC2000 database is shared by several companies/organisations e.g. a shopping centre or technology park. Typically these companies will be tenants within each building/site.

In such a situation it is often unsatisfactory that representatives of one company might be able to view or even edit data belonging to another company. Database partitioning overcomes this by restricting access not only to a company's card reader network but also restricting access to database areas not belonging to other companies/organisations. Database partitioning also empowers each company by giving them control over their own private access areas while still allowing them access to common areas within the building or campus.

- Provides individual access control for each partitioned company
- Partition Administrators and users can only view data in their own partition
- Partition Administrators and Users are capable of adding record & Access levels Independently of the System Administrator
- All partitioned systems will contain common devices that can be assigned to all companies
- Overall AC2000 system administrator can globally report on all partitioned database details and events
- AC2000 database partitioning enables Company records, Personnel card holders and associated Access Levels to be partitioned.

**PRODUCT HIGHLIGHTS**



**Partitioned Users**

Partitioned users are able to run select reports on data and devices that are within their own partition. Alarms can also be viewed on the AC2000 AED (Alarm and Event Display) application which is generated from devices and cardholders from that partition. If required, partition administrators can also assign access privileges to cardholders from other partitions. AC2000 database partitioning enables personnel card holder records to be partitioned per site. \*This feature excludes the partitioning of Visitor & Vehicles card holders. Please contact CEM Systems directly for a full list of applications that are available when using the AC2000 database partitioning feature.

Overall AC2000 system administrators will have the ability to globally view cardholders and alarms, and will have the ability to revoke the rights of any partitioned administrator - effectively locking them out of the system/ building at anytime. This will ensure that a landlord contains overall power and autonomy of the security system.

**Partition Administrator & Users**

Partition administrators and users are capable of adding 'Companies', 'Access Levels' and associating Access Levels to the appropriate Partition Card Formats independently of the overall AC2000 system administrator.

**Partition Data Permissions & Access Rights**

Partitioned administrators and users can only view data in their own partition; they cannot view other partitions data. They can also view and edit User accounts, Companies, Personnel records, Access Level information as well as run reports on their own data and devices as if it was their own individual system.

**Cross Partition Access**

From time to time a cardholder from one partition may need access to a different partition in special circumstances. The AC2000 SE software enables partitions to share access privileges if required.

**Common / Service Areas**

All partitioned systems will contain common devices that can be assigned to all companies. Typically these will be public areas e.g. entrance lobby, restrooms, service areas. These are contained in the default partition template.

**Easy to Install**

The installer sets up the AC2000 CDC Server on initial installation as a partitioned system. Then under user options on the AC2000 SE system software, the administrator simply adds the new partition.

**System Requirements**

AC2000 SE v5.4 software upwards as standard (Contact CEM for further details)

Product specifications and availability is subject to change without notice. Certain product names mentioned herein may be trade names and/or registered trademarks of their companies.