

AC2000 Video Interface

Bosch

FEATURES

OVERVIEW

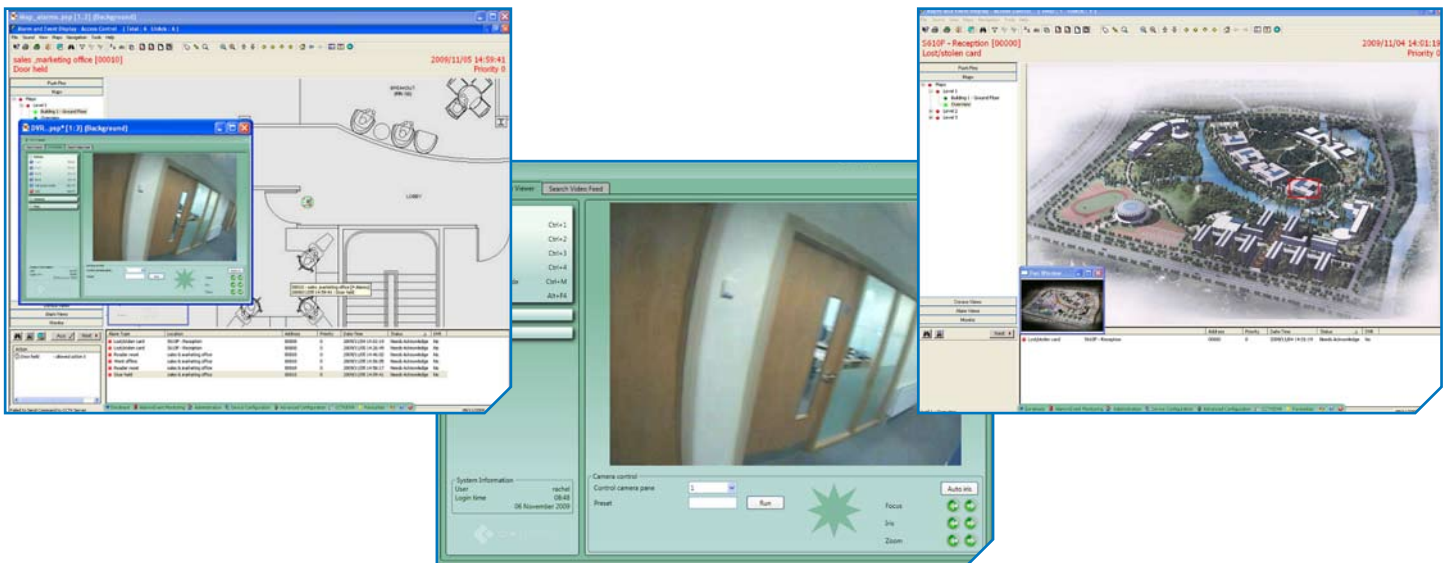
The AC2000 video interface for BOSCH provides the ability to associate access control alarms with BOSCH digital video clips. This enables AC2000 to act as the central Security Management System (SMS).

The AC2000 'DVR Viewer' module seamlessly integrates AC2000 with BOSCH, giving the operator a range of video imaging facilities to generate alarm reports with recorded video playback. The interface also allows system operators to view live video feed and control camera positioning and presets.

The system allows a user to fully integrate the power of a BOSCH Video system into the central AC2000 Alarm and Event Display (AED) application. AED enables all alarms, events and associated camera footage to be displayed centrally on the AC2000 system.

AC2000 BOSCH Video Interface has been designed to integrate easily with BOSCH encoders either directly or via Video Recording Manager (VRM).

- Seamless integration with BOSCH Video products.
- Associate access control alarms with digital video footage
- Live video feed activated directly from AC2000 AED (Alarm and Event Display) application
- Live video pop-up based on priority or time
- Real time visual tracking and recording during alarm conditions
- Camera icons can be positioned in AED module alongside access control readers
- Display up to 16 individual camera feeds simultaneously in a single screen virtual matrix
- Adjust camera pan, tilt, and zoom via integral software control
- Available for use in AC2000 SE (Standard Edition) system

SOFTWARE HIGHLIGHTS


Alarms with associated video

If an alarm event contains associated video footage, the operator can access the footage within the Alarm Event Display (AED) which will activate the DVR Viewer.

Once the DVR Viewer has launched, the actual video footage is then streamed from the BOSCH system. The viewer window will automatically display the video playback from the start of the footage. Standard video controls are available on the DVR Viewer to Play, Pause, and Fast Forward/Rewind.

Additionally system operators can view archived video footage by running alarms reports in the AC2000 Extended Reports application.

Recorded Video Search and Retrieve

The DVR Viewer also allows the user to search for alarms with video footage using various criteria which can then be replayed by clicking on the requested alarm detail.

Camera control

A camera control facility is available for moveable cameras such as dome-based devices. The following controls are available :

- Iris, Zoom and Focus Controls
- Camera Preset Selection
- Pan + Tilt Control
- Auto – Iris Selection

Live video feed

The operator can split the video screen into 1x1, 2x2 (4), 3x3 (9) or 4x4 (16) options allowing the operator to view live footage from up to sixteen cameras simultaneously, each in its separate pane.

Each pane can be simply configured using a drag and drop facility to place the appropriate camera into the required pane.

Live video pop-up

Using the Video Popup Application, live video is available based on alarm priority or time. This allows instant access to live video for certain alarms and is used with a queuing system. This allows the operator to easily view live feeds when multiple alarms are received.

Minimum Requirements

AC2000 SE v6.1

BOSCH Video Requirements

Interface developed against Bosch SDK v4.4.1 which supports the following products:

- *VideoJet X10/X40
- *VIP X1
- VideoJet X20
- VideoJet 10/100/8000/8008
- VIP 10/1000
- AutoDome IP
- FlexiDome IP
- DiBos 8.4 and later
- Dinion IP
- Divar 2
- Divar XF
- VIDOS Lite Monitor Wall
- VIDOS-NVR 4.00

* Highlighted products have been tested with AC2000 Bosch Interface. For clarification on support for other devices please contact CEM Systems

Product specifications and availability is subject to change without notice. Certain product names mentioned herein may be trade names and/or registered trademarks of their companies.